

## **Appendix 6A**

### Changes to RMS Monitoring Networks

The SVBGSA's monitoring networks comprise existing wells monitored by MCWRA as well as new monitoring wells installed by SVBGSA that will also be monitored by MCWRA. Of the existing wells, a subset was selected as representative monitoring sites (RMS) for the groundwater elevation and interconnected surface water (ISW) monitoring networks. The seawater intrusion wells are no longer considered RMS wells because the seawater intrusion SMC are not measured at specific wells as described in the main text of the Periodic Evaluation. All new wells installed by SVBGSA are RMS wells.

In GSP Amendment 1, the sustainability indicator for reduction of groundwater storage was revised to calculate change in storage based on change in groundwater elevations and advancement of the seawater intrusion front. Together, the groundwater elevation and seawater intrusion monitoring networks form the groundwater storage monitoring network. The SVBGSA's groundwater quality and land subsidence monitoring networks are dependent on other agencies' monitoring programs and are not discussed here.

Table 1 contains a list of the SVBGSA's RMS wells, the sustainability indicator the wells monitor, the year they were added to the network, and the year and reason for their removal from the network, if applicable. The RMS wells are labeled as "SGMA Representative," while the seawater intrusion wells are labeled as "SGMA." Many of the same wells are in multiple networks, as shown in Table 1. This table also notes whether the well was already in a monitoring network and was then included in another. For example, most of the groundwater elevation RMS wells in the 2020 GSP were included as part of the groundwater storage RMS monitoring network in GSP Amendment 1 when the groundwater storage SMC metric was changed. The year the well was first included in any of the monitoring networks is the year listed under the "Year Added to Network" field.

The main text of the Periodic Evaluation includes maps summarizing the changes in the groundwater elevation, seawater intrusion, and ISW RMS networks. However, the seawater intrusion maps did not include labels with well names like the groundwater elevation and ISW RMS network maps. Figure 1, Figure 2, and Figure 3 show the seawater intrusion maps with well names for easy reference to Table 1 for the 180-Foot, 400-Foot, and Deep Aquifers, respectively.

Table 1. Representative Monitoring Network Changes

Well	Aquifer	Chronic Lowering of Groundwater Levels Indicator	Reduction in Groundwater Storage Indicator	Seawater Intrusion Indicator	Depletion of Interconnected Surface Water Indicator	Year Added to Network	Year Removed from Network	Notes
12S/02E-33H02	400-Foot Aquifer	SGMA Representative	SGMA Representative	N/A	N/A	2022 (GSP Amendment)		
13S/01E-36J02	Deep Aquifers	SGMA Representative	SGMA Representative	SGMA	N/A	2022 (GSP Amendment)		
13S/02E-10K01	400-Foot Aquifer	SGMA Representative	SGMA Representative	N/A	N/A	2022 (GSP Amendment)		
13S/02E-19Q03	Deep Aquifers	SGMA Representative	SGMA Representative	SGMA	N/A	2020 (GSP)		Additionally established as reduction in groundwater storage RMS well in 2022 GSP Amendment; well was already in groundwater elevation RMS network and seawater intrusion monitoring network.
13S/02E-21N01	400-Foot Aquifer	SGMA Representative	SGMA Representative	N/A	N/A	2020 (GSP)		Additionally established as reduction in groundwater storage RMS well in 2022 GSP Amendment; well was already in groundwater elevation RMS network.
13S/02E-21Q01	180-Foot Aquifer	SGMA Representative	SGMA Representative	SGMA	N/A	2020 (GSP)		Additionally established as reduction in groundwater storage RMS well in 2022 GSP Amendment; well was already in groundwater elevation RMS network and seawater intrusion monitoring network.
13S/02E-24N01	400-Foot Aquifer	SGMA Representative	SGMA Representative	N/A	N/A	2022 (GSP Amendment)		
13S/02E-26L01	180-Foot Aquifer	SGMA Representative	SGMA Representative	N/A	N/A	2022 (GSP Amendment)		
13S/02E-27P01	400-Foot Aquifer	SGMA Representative	SGMA Representative	N/A	N/A	2022 (GSP Amendment)		
13S/02E-28L03	Deep Aquifers	SGMA Representative	SGMA Representative	SGMA	N/A	2022 (GSP Amendment)		
13S/02E-31N02	400-Foot Aquifer	SGMA Representative	SGMA Representative	N/A	N/A	2022 (GSP Amendment)		
13S/02E-32E05	Deep Aquifers	SGMA Representative	SGMA Representative	N/A	N/A	2022 (GSP Amendment)		
13S/02E-32J03	400-Foot Aquifer	SGMA Representative	SGMA Representative	N/A	N/A	2022 (Annual Report WY 2022)		
13S/02E-33R01	180-Foot Aquifer	SGMA Representative	SGMA Representative	N/A	N/A	2022 (Annual Report WY 2022)		

Well	Aquifer	Chronic Lowering of Groundwater Levels Indicator	Reduction in Groundwater Storage Indicator	Seawater Intrusion Indicator	Depletion of Interconnected Surface Water Indicator	Year Added to Network	Year Removed from Network	Notes
14S/02E-02C03	400-Foot Aquifer	SGMA Representative	SGMA Representative	SGMA	N/A	2022 (GSP Amendment)		
14S/02E-03F03	400-Foot Aquifer	SGMA Representative	SGMA Representative	SGMA	N/A	2020 (GSP)		Additionally established as reduction in groundwater storage RMS well in 2022 GSP Amendment; well was already in groundwater elevation RMS network and seawater intrusion monitoring network.
14S/02E-03F04	180-Foot Aquifer	SGMA Representative	SGMA Representative	SGMA	N/A	2020 (GSP)		Additionally established as reduction in groundwater storage RMS well in 2022 GSP Amendment; well was already in groundwater elevation RMS network and seawater intrusion monitoring network.
14S/02E-05K01	400-Foot Aquifer	SGMA Representative	SGMA Representative	N/A	N/A	2022 (Annual Report WY 2022)		
14S/02E-06L01	Deep Aquifers	SGMA Representative	SGMA Representative	N/A	N/A	2022 (GSP Amendment)		
14S/02E-08M02	400-Foot Aquifer	SGMA Representative	SGMA Representative	N/A	N/A	2020 (GSP)		Additionally established as reduction in groundwater storage RMS well in 2022 GSP Amendment; well was already in groundwater elevation RMS network.
14S/02E-10P01	180-Foot Aquifer	SGMA Representative	SGMA Representative	N/A	N/A	2022 (GSP Amendment)		
14S/02E-11A02	180-Foot Aquifer	SGMA Representative	SGMA Representative	SGMA	N/A	2022 (GSP Amendment)		
14S/02E-11A04	400-Foot Aquifer	SGMA Representative	SGMA Representative	SGMA	N/A	2022 (GSP Amendment)		
14S/02E-11M03	400-Foot Aquifer	SGMA Representative	SGMA Representative	SGMA	N/A	2022 (GSP Amendment)		
14S/02E-12B02	180-Foot Aquifer	SGMA Representative	SGMA Representative	SGMA	N/A	2020 (GSP)		Additionally established as reduction in groundwater storage RMS well in 2022 GSP Amendment; well was already in groundwater elevation RMS network and seawater intrusion monitoring network.
14S/02E-12B03	400-Foot Aquifer	SGMA Representative	SGMA Representative	SGMA	N/A	2020 (GSP)		Additionally established as reduction in groundwater storage RMS well in 2022 GSP Amendment; well was already in groundwater elevation RMS network and seawater intrusion monitoring network.

Well	Aquifer	Chronic Lowering of Groundwater Levels Indicator	Reduction in Groundwater Storage Indicator	Seawater Intrusion Indicator	Depletion of Interconnected Surface Water Indicator	Year Added to Network	Year Removed from Network	Notes
14S/02E-12Q01	400-Foot Aquifer	SGMA Representative	SGMA Representative	N/A	N/A	2020 (GSP)		Additionally established as reduction in groundwater storage RMS well in 2022 GSP Amendment; well was already in groundwater elevation RMS network.
14S/02E-13F03	180-Foot Aquifer	SGMA Representative	SGMA Representative	SGMA	N/A	2022 (GSP Amendment)		
14S/02E-16A02	400-Foot Aquifer	SGMA Representative	SGMA Representative	N/A	N/A	2022 (GSP Amendment)		
14S/02E-17C02	180-Foot Aquifer	SGMA Representative	SGMA Representative	SGMA	N/A	2022 (GSP Amendment)		
14S/02E-18B01	Deep Aquifers	N/A	N/A	SGMA	N/A	2022 (GSP Amendment)		Removed from groundwater elevation and storage monitoring network in 2025 Periodic Evaluation; still used for seawater intrusion monitoring
14S/02E-21L01	180-Foot Aquifer	SGMA Representative	SGMA Representative	SGMA	N/A	2022 (GSP Amendment)		
14S/02E-22A03	Deep Aquifers	SGMA Representative	SGMA Representative	SGMA	N/A	2022 (GSP Amendment)		
14S/02E-22L01	400-Foot Aquifer	N/A	N/A	N/A	N/A	2022 (GSP Amendment)	2024 (Periodic Evaluation)	Removed from groundwater elevation RMS network and seawater intrusion monitoring network because the well was destroyed.
14S/02E-26H01	180-Foot Aquifer	SGMA Representative	SGMA Representative	SGMA	N/A	2020 (GSP)		Additionally established as reduction in groundwater storage RMS well in 2022 GSP Amendment; well was already in groundwater elevation RMS network and seawater intrusion monitoring network.
14S/02E-27A01	180-Foot Aquifer	SGMA Representative	SGMA Representative	SGMA	N/A	2020 (GSP)		Additionally established as reduction in groundwater storage RMS well in 2022 GSP Amendment; well was already in groundwater elevation RMS network and seawater intrusion monitoring network.
14S/02E-27G03	400-Foot Aquifer	SGMA Representative	SGMA Representative	N/A	N/A	2022 (GSP Amendment)		
14S/02E-28C02	Deep Aquifers	N/A	N/A	SGMA	N/A	2022 (GSP Amendment)		Removed from groundwater elevation and storage monitoring network in 2025 Periodic Evaluation; still used for seawater intrusion monitoring
14S/02E-34A03	400-Foot Aquifer	SGMA Representative	SGMA Representative	SGMA	N/A	2022 (GSP Amendment)		

Well	Aquifer	Chronic Lowering of Groundwater Levels Indicator	Reduction in Groundwater Storage Indicator	Seawater Intrusion Indicator	Depletion of Interconnected Surface Water Indicator	Year Added to Network	Year Removed from Network	Notes
14S/02E-34B03	180-Foot Aquifer	SGMA Representative	SGMA Representative	SGMA	N/A	2022 (GSP Amendment)		
14S/02E-36E01	180-Foot Aquifer	SGMA Representative	SGMA Representative	SGMA	N/A	2022 (GSP Amendment)		
14S/02E-36G01	400-Foot Aquifer	SGMA Representative	SGMA Representative	SGMA	N/A	2022 (GSP Amendment)		
14S/03E-18C01	180-Foot Aquifer	SGMA Representative	SGMA Representative	SGMA	N/A	2020 (GSP)		Additionally established as reduction in groundwater storage RMS well in 2022 GSP Amendment; well was already in groundwater elevation RMS network and seawater intrusion monitoring network.
14S/03E-18C02	400-Foot Aquifer	SGMA Representative	SGMA Representative	SGMA	N/A	2020 (GSP)		Additionally established as reduction in groundwater storage RMS well in 2022 GSP Amendment; well was already in groundwater elevation RMS network and seawater intrusion monitoring network.
14S/03E-19G01	180-Foot Aquifer	SGMA Representative	SGMA Representative	N/A	N/A	2022 (Annual Report WY 2022)		
14S/03E-20C01	400-Foot Aquifer	SGMA Representative	SGMA Representative	N/A	N/A	2022 (GSP Amendment)		
14S/03E-29F03	400-Foot Aquifer	SGMA Representative	SGMA Representative	N/A	N/A	2022 (GSP Amendment)		
14S/03E-30G08	180-Foot Aquifer	SGMA Representative	SGMA Representative	SGMA	N/A	2020 (GSP)		Additionally established as reduction in groundwater storage RMS well in 2022 GSP Amendment; well was already in groundwater elevation RMS network and seawater intrusion monitoring network.
14S/03E-31F01	180-Foot Aquifer	SGMA Representative	SGMA Representative	N/A	N/A	2022 (GSP Amendment)		
14S/03E-31L01	400-Foot Aquifer	SGMA Representative	SGMA Representative	N/A	N/A	2022 (GSP Amendment)		
15S/02E-01A03	400-Foot Aquifer	SGMA Representative	SGMA Representative	N/A	N/A	2022 (GSP Amendment)		
15S/02E-02G01	400-Foot Aquifer	SGMA Representative	SGMA Representative	N/A	N/A	2022 (GSP Amendment)		
15S/02E-12A01	400-Foot Aquifer	SGMA Representative	SGMA Representative	N/A	N/A	2022 (GSP Amendment)		
15S/02E-12C01	180-Foot Aquifer	SGMA Representative	SGMA Representative	SGMA	N/A	2022 (GSP Amendment)		

Well	Aquifer	Chronic Lowering of Groundwater Levels Indicator	Reduction in Groundwater Storage Indicator	Seawater Intrusion Indicator	Depletion of Interconnected Surface Water Indicator	Year Added to Network	Year Removed from Network	Notes
15S/03E-03R02	400-Foot Aquifer	SGMA Representative	SGMA Representative	N/A	N/A	2022 (GSP Amendment)		
15S/03E-04Q01	400-Foot Aquifer	SGMA Representative	SGMA Representative	N/A	N/A	2022 (GSP Amendment)		
15S/03E-05C02	400-Foot Aquifer	SGMA Representative	SGMA Representative	N/A	N/A	2022 (GSP Amendment)		
15S/03E-08F01	400-Foot Aquifer	SGMA Representative	SGMA Representative	N/A	N/A	2022 (GSP Amendment)		
15S/03E-09E03	180-Foot Aquifer	SGMA Representative	SGMA Representative	N/A	N/A	2022 (GSP Amendment)		
15S/03E-10D04	400-Foot and Deep Aquifers	N/A	N/A	SGMA	N/A	2022 (GSP Amendment)		Removed from groundwater elevation and storage monitoring network in 2025 Periodic Evaluation; still used for seawater intrusion monitoring
15S/03E-13N01	180-Foot Aquifer	SGMA Representative	SGMA Representative	N/A	N/A	2022 (GSP Amendment)		
15S/03E-14P02	400-Foot Aquifer	SGMA Representative	SGMA Representative	N/A	N/A	2022 (GSP Amendment)		
15S/03E-15B01	400-Foot Aquifer	SGMA Representative	SGMA Representative	N/A	N/A	2022 (GSP Amendment)		
15S/03E-16F02	400-Foot Aquifer	SGMA Representative	SGMA Representative	N/A	N/A	2020 (GSP)		Additionally established as reduction in groundwater storage RMS well in 2022 GSP Amendment; well was already in groundwater elevation RMS network.
15S/03E-16M01	180-Foot Aquifer	SGMA Representative	SGMA Representative	N/A	N/A	2020 (GSP)		Additionally established as reduction in groundwater storage RMS well in 2022 GSP Amendment; well was already in groundwater elevation RMS network.
15S/03E-17E02	400-Foot Aquifer	N/A	N/A	N/A	N/A	2022 (GSP Amendment)	2024 (Periodic Evaluation)	Removed from groundwater elevation and storage RMS network because aquifer designation was revised.
15S/03E-17M01	180-Foot Aquifer	SGMA Representative	SGMA Representative	N/A	N/A	2020 (GSP)		Additionally established as reduction in groundwater storage RMS well in 2022 GSP Amendment; well was already in groundwater elevation RMS network.
15S/03E-17P02	400-Foot Aquifer	SGMA Representative	SGMA Representative	N/A	N/A	2022 (GSP Amendment)		
15S/03E-25L01	180-Foot Aquifer	SGMA Representative	SGMA Representative	N/A	N/A	2022 (GSP Amendment)		
15S/03E-26A01	400-Foot Aquifer	SGMA Representative	SGMA Representative	N/A	N/A	2022 (GSP Amendment)		

Well	Aquifer	Chronic Lowering of Groundwater Levels Indicator	Reduction in Groundwater Storage Indicator	Seawater Intrusion Indicator	Depletion of Interconnected Surface Water Indicator	Year Added to Network	Year Removed from Network	Notes
15S/03E-26F01	180-Foot Aquifer	SGMA Representative	SGMA Representative	N/A	N/A	2022 (GSP Amendment)		
15S/03E-28B02	400-Foot Aquifer	SGMA Representative	SGMA Representative	N/A	N/A	2022 (GSP Amendment)		
15S/04E-29Q02	400-Foot Aquifer	SGMA Representative	SGMA Representative	N/A	N/A	2022 (GSP Amendment)		
15S/04E-31A02	180-Foot Aquifer	SGMA Representative	SGMA Representative	N/A	N/A	2022 (GSP Amendment)		
16S/04E-04C01	400-Foot Aquifer	SGMA Representative	SGMA Representative	N/A	N/A	2022 (GSP Amendment)		
16S/04E-05M02	180-Foot Aquifer	SGMA Representative	SGMA Representative	N/A	N/A	2022 (GSP Amendment)		
16S/04E-08H03	400-Foot Aquifer	SGMA Representative	SGMA Representative	SGMA	N/A	2020 (GSP)		Additionally established as reduction in groundwater storage RMS well in 2022 GSP Amendment; well was already in groundwater elevation RMS network and seawater intrusion monitoring network.
16S/04E-10R02	400-Foot Aquifer	SGMA Representative	SGMA Representative	N/A	N/A	2022 (GSP Amendment)		
16S/04E-11D51	400-Foot Aquifer	N/A	N/A	SGMA	N/A	2022 (GSP Amendment)		Removed from groundwater elevation and storage monitoring network in 2025 Periodic Evaluation; still used for seawater intrusion monitoring
16S/04E-13R02	180-Foot Aquifer	SGMA Representative	SGMA Representative	N/A	N/A	2022 (GSP Amendment)		
16S/04E-15D01	180-Foot Aquifer	SGMA Representative	SGMA Representative	N/A	N/A	2020 (GSP)		Additionally established as reduction in groundwater storage RMS well in 2022 GSP Amendment; well was already in groundwater elevation RMS network.
16S/04E-15R02	180-Foot Aquifer	SGMA Representative	SGMA Representative	N/A	N/A	2022 (GSP Amendment)		
16S/04E-25C01	180-Foot Aquifer	SGMA Representative	SGMA Representative	N/A	N/A	2022 (Annual Report WY 2022)		
16S/04E-25G01	400-Foot Aquifer	SGMA Representative	SGMA Representative	N/A	N/A	2022 (GSP Amendment)		
16S/05E-30E01	180-Foot Aquifer	SGMA Representative	SGMA Representative	N/A	N/A	2022 (GSP Amendment)		
16S/05E-30J02	400-Foot Aquifer	SGMA Representative	SGMA Representative	N/A	N/A	2022 (GSP Amendment)		



Well	Aquifer	Chronic Lowering of Groundwater Levels Indicator	Reduction in Groundwater Storage Indicator	Seawater Intrusion Indicator	Depletion of Interconnected Surface Water Indicator	Year Added to Network	Year Removed from Network	Notes
16S/05E-31M01	180-Foot Aquifer	SGMA Representative	SGMA Representative	N/A	N/A	2022 (GSP Amendment)		
17S/04E-01D01	180-Foot Aquifer	SGMA Representative	SGMA Representative	N/A	N/A	2022 (GSP Amendment)		
17S/05E-06C02	180-Foot Aquifer	SGMA Representative	SGMA Representative	SGMA	N/A	2020 (GSP)		Additionally established as reduction in groundwater storage RMS well in 2022 GSP Amendment; well was already in groundwater elevation RMS network and seawater intrusion monitoring network.
13S/01E-25R01	Deep Aquifers	N/A	N/A	SGMA	N/A	2022 (GSP Amendment)		
13S/02E-15M01	400-Foot Aquifer	N/A	N/A	SGMA	N/A	2022 (GSP Amendment)		
13S/02E-15R02	400-Foot Aquifer	N/A	N/A	SGMA	N/A	2022 (GSP Amendment)		
13S/02E-15R03	180-Foot Aquifer	N/A	N/A	SGMA	N/A	2022 (GSP Amendment)		
13S/02E-20J01	400-Foot Aquifer	N/A	N/A	SGMA	N/A	2022 (GSP Amendment)		
13S/02E-28L02	180-Foot and 400-Foot Aquifers	N/A	N/A	SGMA	N/A	2022 (GSP Amendment)		
13S/02E-28M02	400-Foot Aquifer	N/A	N/A	SGMA	N/A	2022 (GSP Amendment)		
13S/02E-31A02	Deep Aquifers	N/A	N/A	SGMA	N/A	2022 (GSP Amendment)		
13S/02E-34G01	400-Foot Aquifer	N/A	N/A	SGMA	N/A	2022 (GSP Amendment)		
13S/02E-34G02	400-Foot Aquifer	N/A	N/A	SGMA	N/A	2022 (GSP Amendment)		
13S/02E-34J50	400-Foot Aquifer	N/A	N/A	SGMA	N/A	2022 (GSP Amendment)		
13S/02E-34M01	400-Foot Aquifer	N/A	N/A	SGMA	N/A	2022 (GSP Amendment)		
13S/02E-35H01	400-Foot Aquifer	N/A	N/A	SGMA	N/A	2022 (GSP Amendment)		
13S/02E-36F50	400-Foot Aquifer	N/A	N/A	SGMA	N/A	2022 (GSP Amendment)		

Well	Aquifer	Chronic Lowering of Groundwater Levels Indicator	Reduction in Groundwater Storage Indicator	Seawater Intrusion Indicator	Depletion of Interconnected Surface Water Indicator	Year Added to Network	Year Removed from Network	Notes
14S/01E-13J01		N/A	N/A	N/A	N/A	2022 (GSP Amendment)	2024 (Periodic Evaluation)	Removed from seawater intrusion monitoring network because there is no well completion report available for this well and the aquifer designation is unknown.
14S/02E-01C01	400-Foot Aquifer	N/A	N/A	N/A	N/A	2022 (GSP Amendment)	2024 (Periodic Evaluation)	Removed from seawater intrusion monitoring network because the well was destroyed.
14S/02E-02A02	400-Foot Aquifer	N/A	N/A	SGMA	N/A	2022 (GSP Amendment)		
14S/02E-03H01	400-Foot Aquifer	N/A	N/A	SGMA	N/A	2022 (GSP Amendment)		
14S/02E-03M02	400-Foot Aquifer	N/A	N/A	SGMA	N/A	2022 (GSP Amendment)		
14S/02E-03P01	400-Foot Aquifer	N/A	N/A	SGMA	N/A	2022 (GSP Amendment)		
14S/02E-03R02	400-Foot Aquifer	N/A	N/A	SGMA	N/A	2022 (GSP Amendment)		
14S/02E-04H01	400-Foot Aquifer	N/A	N/A	SGMA	N/A	2022 (GSP Amendment)		
14S/02E-05C03	400-Foot Aquifer	N/A	N/A	SGMA	N/A	2022 (GSP Amendment)		
14S/02E-05R03	400-Foot Aquifer	N/A	N/A	N/A	N/A	2022 (GSP Amendment)	2024 (Periodic Evaluation)	Removed from seawater intrusion monitoring network because the well was destroyed.
14S/02E-07J03	Deep Aquifers	SGMA Representative	SGMA Representative	SGMA	N/A	2022 (GSP Amendment)		Additionally established as reduction in groundwater elevation and storage RMS well in 2025 Periodic Evaluation; well was already in seawater intrusion monitoring network.
14S/02E-08C03	400-Foot Aquifer	N/A	N/A	SGMA	N/A	2022 (GSP Amendment)		
14S/02E-09D04	400-Foot Aquifer	N/A	N/A	SGMA	N/A	2022 (GSP Amendment)		
14S/02E-09N02	400-Foot Aquifer	N/A	N/A	SGMA	N/A	2022 (GSP Amendment)		
14S/02E-10H01	400-Foot Aquifer	N/A	N/A	SGMA	N/A	2022 (GSP Amendment)		
14S/02E-10M02	400-Foot Aquifer	N/A	N/A	SGMA	N/A	2022 (GSP Amendment)		

Well	Aquifer	Chronic Lowering of Groundwater Levels Indicator	Reduction in Groundwater Storage Indicator	Seawater Intrusion Indicator	Depletion of Interconnected Surface Water Indicator	Year Added to Network	Year Removed from Network	Notes
14S/02E-10N51	400-Foot Aquifer	N/A	N/A	SGMA	N/A	2022 (GSP Amendment)		
14S/02E-11A03	Shallow Sediments	N/A	N/A	N/A	N/A	2022 (GSP Amendment)	2024 (Periodic Evaluation)	Removed from seawater intrusion monitoring network because the well is not in a principal aquifer.
14S/02E-11B01	400-Foot Aquifer	N/A	N/A	SGMA	N/A	2022 (GSP Amendment)		
14S/02E-13E50	400-Foot Aquifer	N/A	N/A	SGMA	N/A	2022 (GSP Amendment)		
14S/02E-13F02	400-Foot Aquifer	N/A	N/A	SGMA	N/A	2022 (GSP Amendment)		
14S/02E-13G01	180-Foot and 400-Foot Aquifers	N/A	N/A	SGMA	N/A	2022 (GSP Amendment)		
14S/02E-14R02	Deep Aquifers	SGMA Representative	SGMA Representative	SGMA	N/A	2022 (GSP Amendment)		Additionally established as reduction in groundwater elevation and storage RMS well in 2025 Periodic Evaluation; well was already in seawater intrusion monitoring network.
14S/02E-14R50	400-Foot Aquifer	N/A	N/A	N/A	N/A	2022 (GSP Amendment)	2024 (Periodic Evaluation)	Removed from seawater intrusion monitoring network because the well was destroyed.
14S/02E-15A01	400-Foot Aquifer	N/A	N/A	SGMA	N/A	2022 (GSP Amendment)		
14S/02E-15L02	180-Foot Aquifer	N/A	N/A	SGMA	N/A	2022 (GSP Amendment)		
14S/02E-15N01	400-Foot Aquifer	N/A	N/A	SGMA	N/A	2022 (GSP Amendment)		
14S/02E-15P01	400-Foot Aquifer	N/A	N/A	SGMA	N/A	2022 (GSP Amendment)		
14S/02E-19G01	Deep Aquifers	N/A	N/A	SGMA	N/A	2022 (GSP Amendment)		
14S/02E-20B01	180-Foot Aquifer	N/A	N/A	SGMA	N/A	2022 (GSP Amendment)		
14S/02E-20E01	Deep Aquifers	SGMA Representative	SGMA Representative	SGMA	N/A	2022 (GSP Amendment)		Additionally established as reduction in groundwater elevation and storage RMS well in 2025 Periodic Evaluation; well was already in seawater intrusion monitoring network.

Well	Aquifer	Chronic Lowering of Groundwater Levels Indicator	Reduction in Groundwater Storage Indicator	Seawater Intrusion Indicator	Depletion of Interconnected Surface Water Indicator	Year Added to Network	Year Removed from Network	Notes
14S/02E-21K04	Deep Aquifers	SGMA Representative	SGMA Representative	SGMA	N/A	2022 (GSP Amendment)		Additionally established as reduction in groundwater elevation and storage RMS well in 2025 Periodic Evaluation; well was already in seawater intrusion monitoring network.
14S/02E-21L02	Deep Aquifers	N/A	N/A	SGMA	N/A	2022 (GSP Amendment)		
14S/02E-22J02	Deep Aquifers	N/A	N/A	SGMA	N/A	2022 (GSP Amendment)		
14S/02E-22P02	180-Foot Aquifer	N/A	N/A	SGMA	N/A	2022 (GSP Amendment)		
14S/02E-22R01	400-Foot Aquifer	N/A	N/A	SGMA	N/A	2022 (GSP Amendment)		
14S/02E-23G02	Deep Aquifers	N/A	N/A	SGMA	N/A	2022 (GSP Amendment)		
14S/02E-23J02	Deep Aquifers	SGMA Representative	SGMA Representative	SGMA	N/A	2022 (GSP Amendment)		Additionally established as reduction in groundwater elevation and storage RMS well in 2025 Periodic Evaluation; well was already in seawater intrusion monitoring network.
14S/02E-23P02	Deep Aquifers	N/A	N/A	SGMA	N/A	2022 (GSP Amendment)		
14S/02E-24E01	400-Foot Aquifer	N/A	N/A	SGMA	N/A	2022 (GSP Amendment)		
14S/02E-24P02	400-Foot Aquifer	N/A	N/A	SGMA	N/A	2022 (GSP Amendment)		
14S/02E-24Q01	180-Foot Aquifer	N/A	N/A	SGMA	N/A	2022 (GSP Amendment)		
14S/02E-25A03	Deep Aquifers	SGMA Representative	SGMA Representative	SGMA	N/A	2022 (GSP Amendment)		Additionally established as reduction in groundwater elevation and storage RMS well in 2025 Periodic Evaluation; well was already in seawater intrusion monitoring network.
14S/02E-25D51	400-Foot Aquifer	N/A	N/A	SGMA	N/A	2022 (GSP Amendment)		
14S/02E-26A10	Deep Aquifers	N/A	N/A	SGMA	N/A	2022 (GSP Amendment)		
14S/02E-26C50	400-Foot Aquifer	N/A	N/A	SGMA	N/A	2022 (GSP Amendment)		
14S/02E-26D01	Deep Aquifers	N/A	N/A	SGMA	N/A	2022 (GSP Amendment)		

Well	Aquifer	Chronic Lowering of Groundwater Levels Indicator	Reduction in Groundwater Storage Indicator	Seawater Intrusion Indicator	Depletion of Interconnected Surface Water Indicator	Year Added to Network	Year Removed from Network	Notes
14S/02E-26G01	Deep Aquifers	SGMA Representative	SGMA Representative	SGMA	N/A	2022 (GSP Amendment)		Additionally established as reduction in groundwater elevation and storage RMS well in 2025 Periodic Evaluation; well was already in seawater intrusion monitoring network.
14S/02E-26J03	400-Foot Aquifer	N/A	N/A	N/A	N/A	2022 (GSP Amendment)	2022 (WY 2022 Annual Report)	Removed from seawater intrusion monitoring network because the well was destroyed.
14S/02E-26J04	Deep Aquifers	N/A	N/A	SGMA	N/A	2022 (GSP Amendment)		
14S/02E-26N03	180-Foot Aquifer	N/A	N/A	SGMA	N/A	2022 (GSP Amendment)		
14S/02E-26N50	180-Foot Aquifer	N/A	N/A	SGMA	N/A	2022 (GSP Amendment)		
14S/02E-26P01	180-Foot Aquifer	N/A	N/A	SGMA	N/A	2022 (GSP Amendment)		
14S/02E-27C02	180-Foot and 400-Foot Aquifers	N/A	N/A	SGMA	N/A	2022 (GSP Amendment)		
14S/02E-27F02	180-Foot Aquifer	N/A	N/A	SGMA	N/A	2022 (GSP Amendment)		
14S/02E-27J02	Deep Aquifers	N/A	N/A	SGMA	N/A	2022 (GSP Amendment)		
14S/02E-27K02	Deep Aquifers	SGMA Representative	SGMA Representative	SGMA	N/A	2022 (GSP Amendment)		Additionally established as reduction in groundwater elevation and storage RMS well in 2025 Periodic Evaluation; well was already in seawater intrusion monitoring network.
14S/02E-28H04	Deep Aquifers	SGMA Representative	SGMA Representative	SGMA	N/A	2022 (GSP Amendment)		Additionally established as reduction in groundwater elevation and storage RMS well in 2025 Periodic Evaluation; well was already in seawater intrusion monitoring network.
14S/02E-29C01	Deep Aquifers	N/A	N/A	SGMA	N/A	2022 (GSP Amendment)		
14S/02E-34A04	400-Foot Aquifer	N/A	N/A	SGMA	N/A	2022 (GSP Amendment)		
14S/02E-34M01	Deep Aquifers	N/A	N/A	SGMA	N/A	2022 (GSP Amendment)		

Well	Aquifer	Chronic Lowering of Groundwater Levels Indicator	Reduction in Groundwater Storage Indicator	Seawater Intrusion Indicator	Depletion of Interconnected Surface Water Indicator	Year Added to Network	Year Removed from Network	Notes
14S/02E-35B01	Deep Aquifers	SGMA Representative	SGMA Representative	SGMA	N/A	2022 (GSP Amendment)		Additionally established as reduction in groundwater elevation and storage RMS well in 2025 Periodic Evaluation; well was already in seawater intrusion monitoring network.
14S/02E-36F03	400-Foot Aquifer	N/A	N/A	SGMA	N/A	2022 (GSP Amendment)		
14S/03E-07D50	400-Foot Aquifer	N/A	N/A	SGMA	N/A	2022 (GSP Amendment)		
14S/03E-07K51	400-Foot Aquifer	N/A	N/A	SGMA	N/A	2022 (GSP Amendment)		
14S/03E-07P02	180-Foot Aquifer	N/A	N/A	SGMA	N/A	2022 (GSP Amendment)		
14S/03E-07P50	400-Foot and Deep Aquifers	N/A	N/A	SGMA	N/A	2022 (GSP Amendment)		
14S/03E-18E03	180-Foot Aquifer	N/A	N/A	N/A	N/A	2022 (GSP Amendment)	2024 (Periodic Evaluation)	Removed from seawater intrusion monitoring network because the well was destroyed.
14S/03E-18E04	400-Foot Aquifer	N/A	N/A	SGMA	N/A	2022 (GSP Amendment)		
14S/03E-18P51	180-Foot Aquifer	N/A	N/A	SGMA	N/A	2022 (GSP Amendment)		
14S/03E-19C01	Deep Aquifers	SGMA Representative	SGMA Representative	SGMA	N/A	2022 (GSP Amendment)		Additionally established as reduction in groundwater elevation and storage RMS well in 2025 Periodic Evaluation; well was already in seawater intrusion monitoring network.
14S/03E-30E03	400-Foot Aquifer	N/A	N/A	SGMA	N/A	2022 (GSP Amendment)		
14S/03E-30F01	180-Foot Aquifer	N/A	N/A	SGMA	N/A	2022 (GSP Amendment)		
14S/03E-31B01	180-Foot Aquifer	N/A	N/A	SGMA	N/A	2022 (GSP Amendment)		
14S/03E-31F02	400-Foot Aquifer	N/A	N/A	SGMA	N/A	2022 (GSP Amendment)		
15S/02E-01Q50	400-Foot Aquifer	N/A	N/A	SGMA	N/A	2022 (GSP Amendment)		
15S/02E-02A01	180-Foot Aquifer	N/A	N/A	SGMA	N/A	2022 (GSP Amendment)		

Well	Aquifer	Chronic Lowering of Groundwater Levels Indicator	Reduction in Groundwater Storage Indicator	Seawater Intrusion Indicator	Depletion of Interconnected Surface Water Indicator	Year Added to Network	Year Removed from Network	Notes
15S/02E-03B05	400-Foot Aquifer	N/A	N/A	SGMA	N/A	2022 (GSP Amendment)		
15S/03E-03N58	400-Foot Aquifer	N/A	N/A	SGMA	N/A	2022 (GSP Amendment)		
15S/03E-05R52	400-Foot and Deep Aquifers	N/A	N/A	SGMA	N/A	2022 (GSP Amendment)		
15S/03E-07K01	400-Foot Aquifer	N/A	N/A	SGMA	N/A	2022 (GSP Amendment)		
15S/03E-08L01	400-Foot Aquifer	N/A	N/A	SGMA	N/A	2022 (GSP Amendment)		
16S/04E-03K01	400-Foot Aquifer	N/A	N/A	SGMA	N/A	2022 (GSP Amendment)		
16S/04E-08H01	180-Foot Aquifer	N/A	N/A	SGMA	N/A	2022 (GSP Amendment)		
16S/04E-08H02	400-Foot Aquifer	N/A	N/A	SGMA	N/A	2020 (GSP)		Added to interconnected surface water (ISW) RMS network for 2022 GSP Amendment and removed from ISW RMS network Annual Report 2022; still used for seawater intrusion monitoring.
16S/04E-08H04	180-Foot Aquifer	N/A	N/A	SGMA	N/A	2020 (GSP)		Removed from groundwater elevation in 2022 GSP Amendment; still used for seawater intrusion monitoring.
16S/05E-31P01	400-Foot Aquifer	N/A	N/A	SGMA	N/A	2022 (GSP Amendment)		
16S/05E-31P02	180-Foot Aquifer	N/A	N/A	SGMA	SGMA Representative	2022 (GSP Amendment)		
17S/05E-06C01	400-Foot Aquifer	N/A	N/A	SGMA	N/A	2020 (GSP)		Removed from groundwater elevation in 2022 GSP Amendment; still used for seawater intrusion monitoring.
13S/02E-29D03	400-Foot Aquifer	N/A	N/A	N/A	N/A	2022 (GSP Amendment)	2022 (WY 2022 Annual Report)	Well destroyed
13S/02E-32A02	400-Foot Aquifer	N/A	N/A	N/A	N/A	2020 (GSP)	2022 (WY 2022 Annual Report)	Well destroyed
14S/02E-05F04	400-Foot Aquifer	N/A	N/A	N/A	N/A	2022 (GSP Amendment)	2022 (WY 2022 Annual Report)	Well destroyed
13S/02E-29D04	180-Foot Aquifer	N/A	N/A	N/A	N/A	2022 (GSP Amendment)	2022 (WY 2022 Annual Report)	Well can't be sampled
13S/02E-13N01	180-Foot Aquifer	N/A	N/A	N/A	N/A	2022 (GSP Amendment)	2022 (WY 2022 Annual Report)	Well can't be sampled

Well	Aquifer	Chronic Lowering of Groundwater Levels Indicator	Reduction in Groundwater Storage Indicator	Seawater Intrusion Indicator	Depletion of Interconnected Surface Water Indicator	Year Added to Network	Year Removed from Network	Notes
16S/04E-27B02	180-Foot Aquifer	N/A	N/A	N/A	N/A	2022 (GSP Amendment)	2022 (WY 2022 Annual Report)	Well can't be sampled
14S/01E-24L02	Deep Aquifers	N/A	N/A	N/A	N/A	2020 (GSP)	2022 (GSP Amendment)	Removed from seawater intrusion monitoring network because the well is not in the Subbasin.
14S/01E-24L03	Deep Aquifers	N/A	N/A	N/A	N/A	2020 (GSP)	2022 (GSP Amendment)	Removed from seawater intrusion monitoring network because the well is not in the Subbasin.
14S/01E-24L04	Deep Aquifers	N/A	N/A	N/A	N/A	2020 (GSP)	2022 (GSP Amendment)	Removed from seawater intrusion monitoring network because the well is not in the Subbasin.
14S/01E-24L05	Deep Aquifers	N/A	N/A	N/A	N/A	2020 (GSP)	2022 (GSP Amendment)	Removed from seawater intrusion monitoring network because the well is not in the Subbasin.
14S/02E-04G02	400-Foot Aquifer	N/A	N/A	N/A	N/A	2020 (GSP)	2022 (GSP Amendment)	Removed from seawater intrusion monitoring network because the well was destroyed.
14S/02E-09K02	400-Foot Aquifer	N/A	N/A	N/A	N/A	2020 (GSP)	2022 (GSP Amendment)	Removed from seawater intrusion monitoring network because the well was destroyed.
14S/02E-10E02	400-Foot Aquifer	N/A	N/A	N/A	N/A	2020 (GSP)	2022 (GSP Amendment)	Removed from seawater intrusion monitoring network because the well was destroyed.
14S/02E-14A01	400-Foot Aquifer	N/A	N/A	N/A	N/A	2020 (GSP)	2022 (GSP Amendment)	Removed from seawater intrusion monitoring network because the well was destroyed.
14S/02E-14L03	400-Foot Aquifer	N/A	N/A	N/A	N/A	2020 (GSP)	2022 (GSP Amendment)	Removed from seawater intrusion monitoring network because the well was destroyed.
14S/02E-15C02	400-Foot Aquifer	N/A	N/A	N/A	N/A	2020 (GSP)	2022 (GSP Amendment)	Removed from seawater intrusion monitoring network because the well was destroyed.
14S/02E-16G01	400-Foot Aquifer	N/A	N/A	N/A	N/A	2020 (GSP)	2022 (GSP Amendment)	Removed from seawater intrusion monitoring network because the well was destroyed.
14S/02E-22B01	400-Foot Aquifer	N/A	N/A	N/A	N/A	2020 (GSP)	2022 (GSP Amendment)	Removed from seawater intrusion monitoring network because the well was destroyed.
13S/02E-32H01	180-Foot Aquifer	N/A	N/A	SGMA	N/A	2024 (Periodic Evaluation)		



Well	Aquifer	Chronic Lowering of Groundwater Levels Indicator	Reduction in Groundwater Storage Indicator	Seawater Intrusion Indicator	Depletion of Interconnected Surface Water Indicator	Year Added to Network	Year Removed from Network	Notes
13S/02E-32H02	400-Foot Aquifer	N/A	N/A	SGMA	N/A	2024 (Periodic Evaluation)		
13S/02E-15M03	Deep Aquifers	SGMA Representative	SGMA Representative	N/A	N/A	2024 (Periodic Evaluation)		Not monitored for groundwater elevations by MCWRA yet.
DA-1	Deep Aquifers	SGMA Representative	SGMA Representative	N/A	N/A	2024 (Periodic Evaluation)		
DA-2	Deep Aquifers	SGMA Representative	SGMA Representative	N/A	N/A	2024 (Periodic Evaluation)		
DA-3	Deep Aquifers	SGMA Representative	SGMA Representative	N/A	N/A	2024 (Periodic Evaluation)		
ISW-1	180-Foot Aquifer	N/A	N/A	N/A	SGMA Representative	2024 (Periodic Evaluation)		
14S/02E-15K01	400-Foot Aquifer	SGMA Representative	SGMA Representative	N/A	N/A	2024 (Periodic Evaluation)		

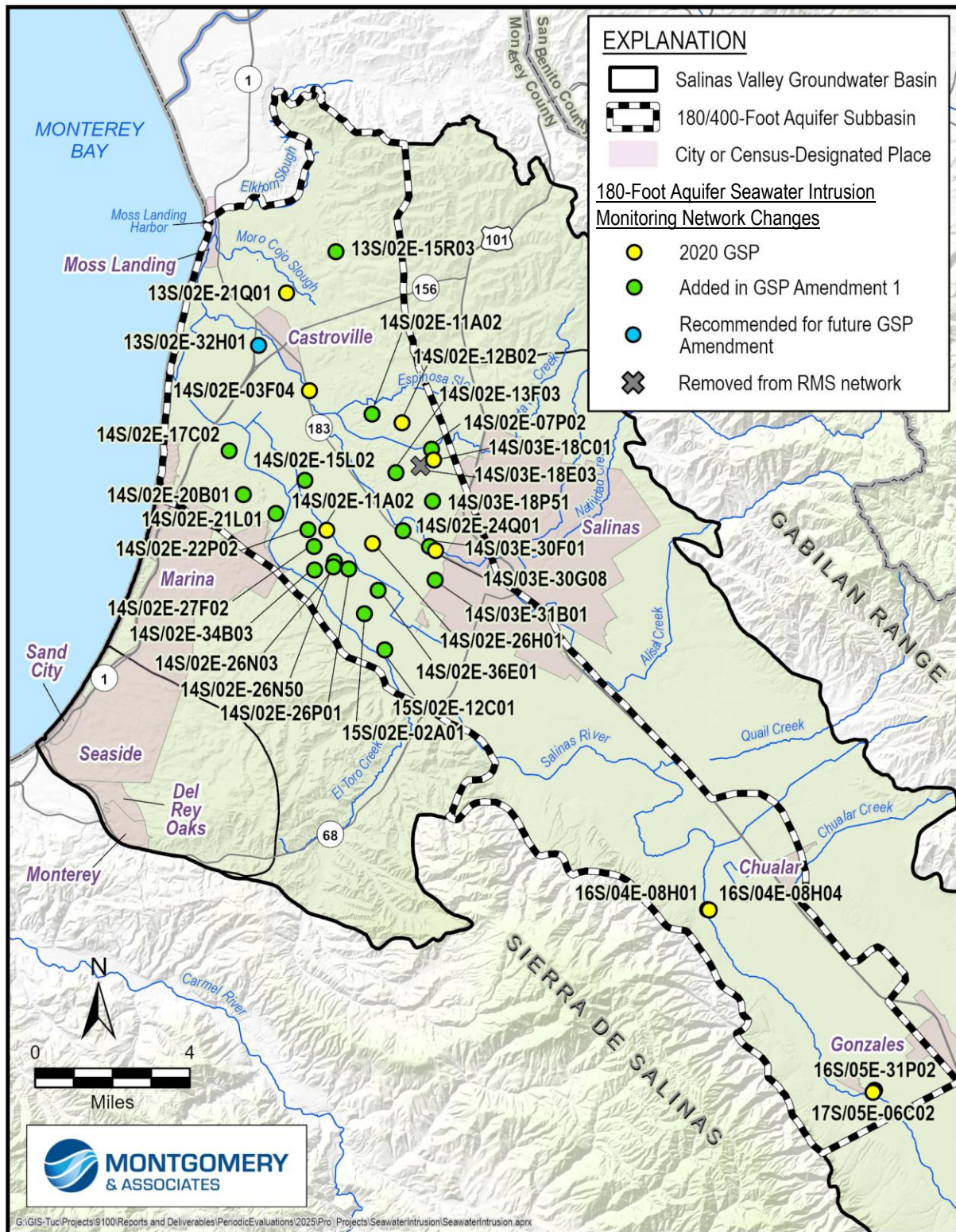


Figure 1. 180-Foot Aquifer Seawater Intrusion Monitoring Network to Reference Table 1



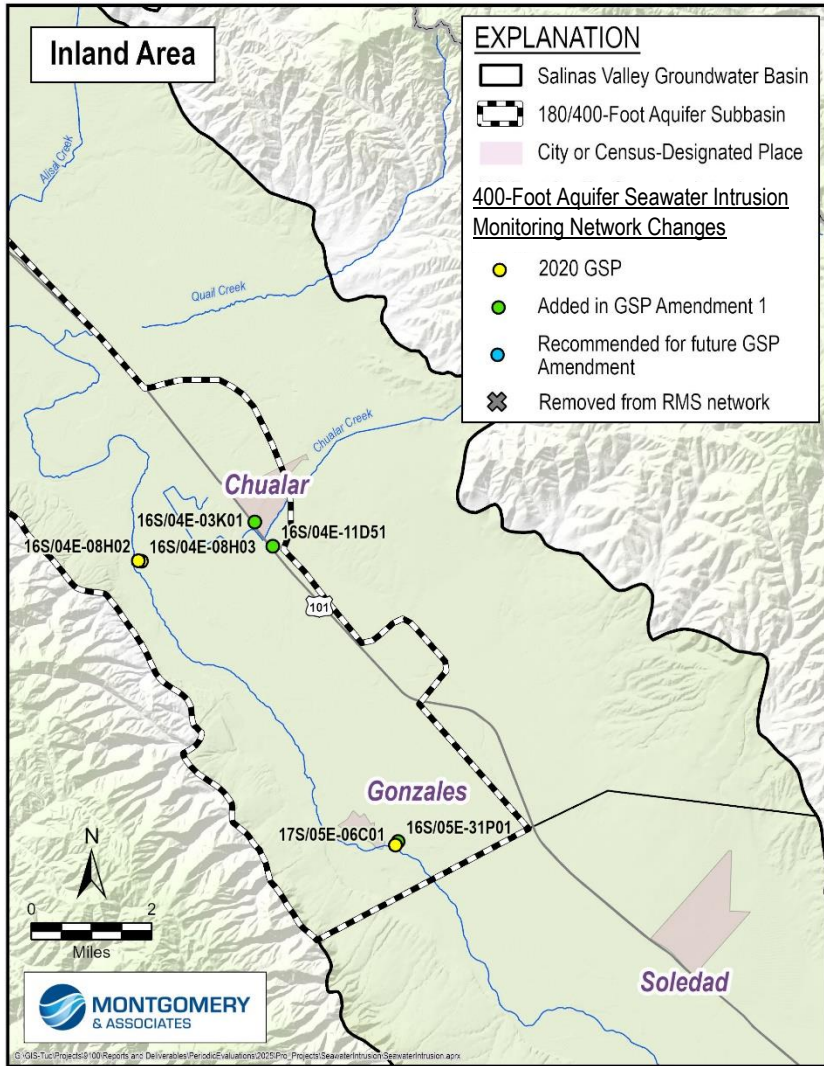
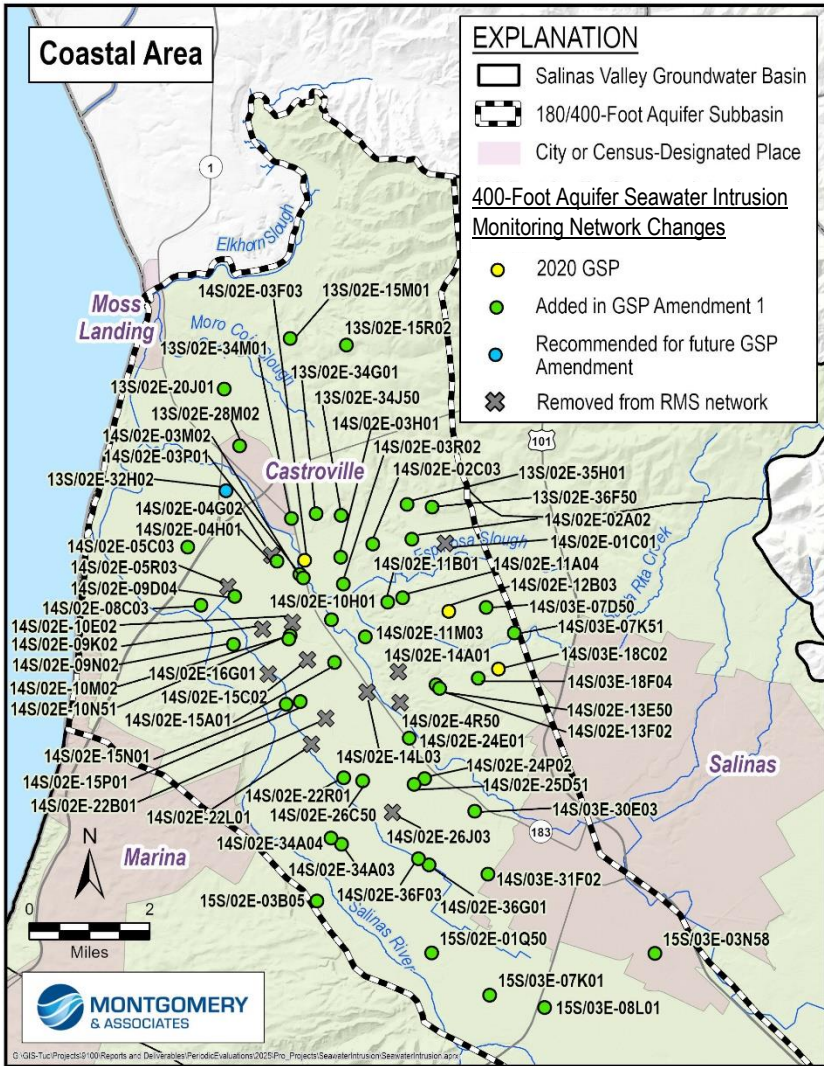


Figure 2. 400-Foot Aquifer Seawater Intrusion Monitoring Network to Reference Table 1



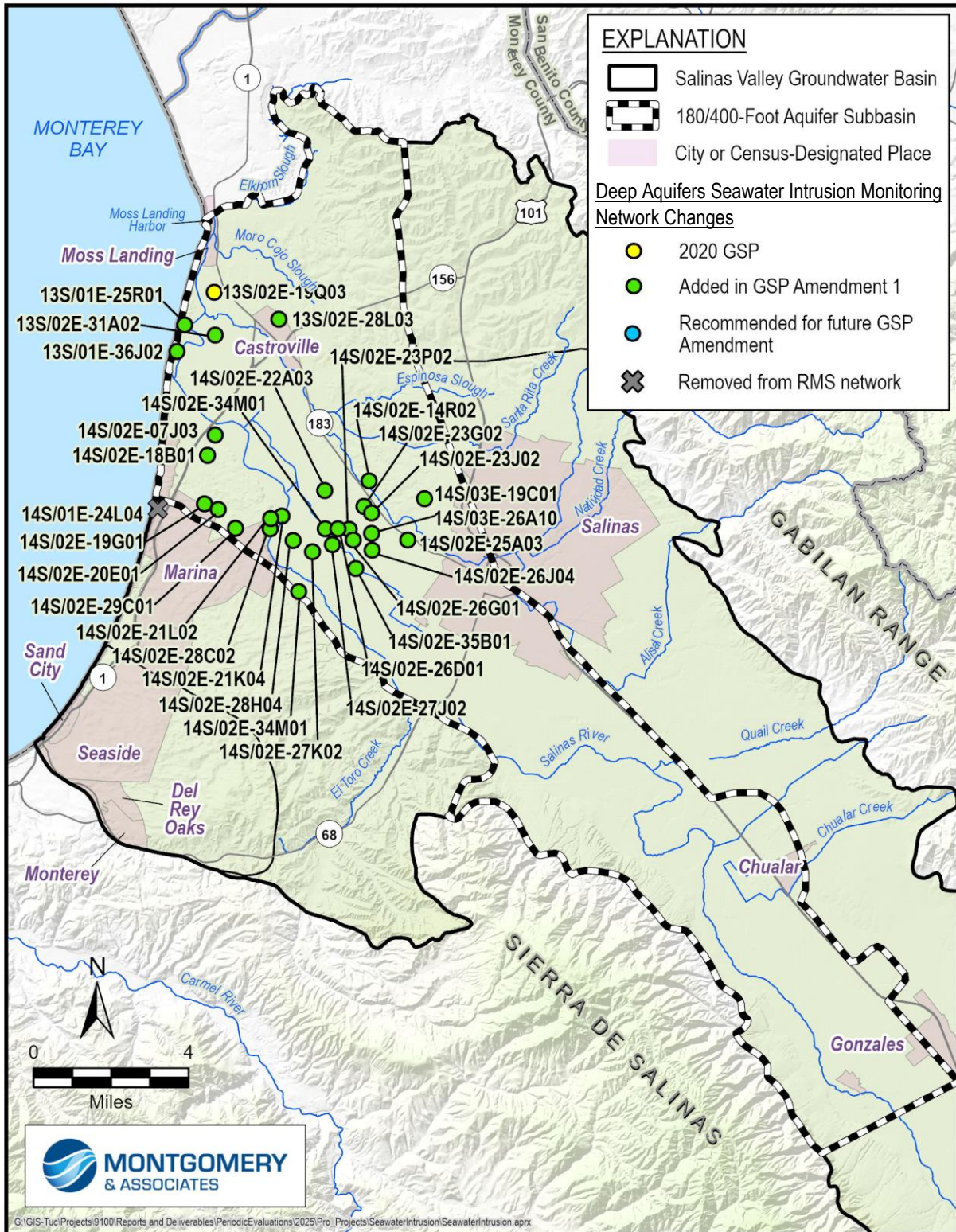


Figure 3. Deep Aquifers Seawater Intrusion Monitoring Network to Reference Table 1