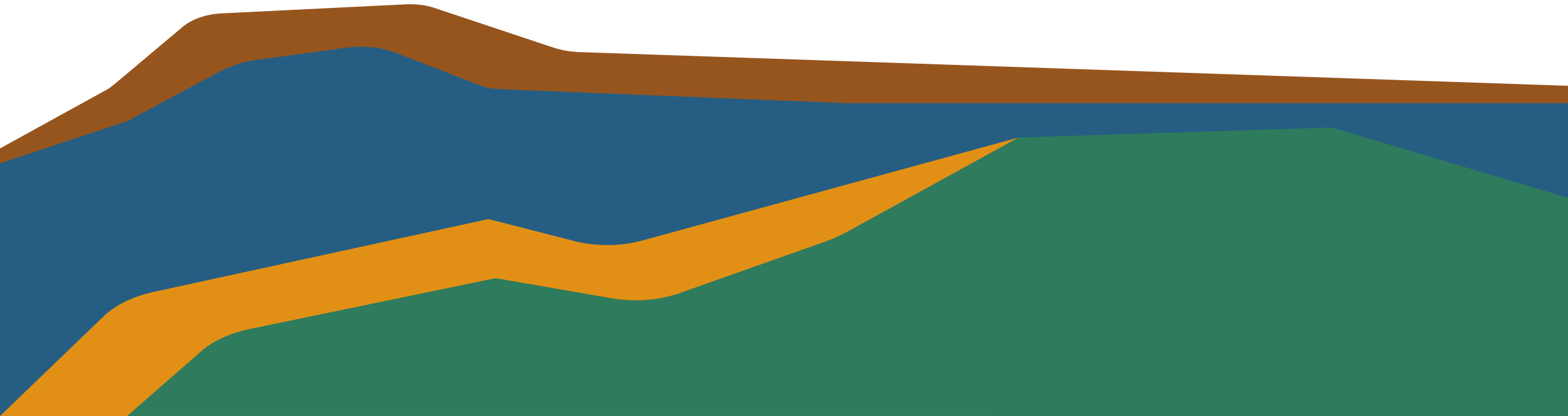




Overview of SGMA, SVBGSA and Subbasin Implementation Committee





Why Groundwater is Important

Groundwater is an essential source of water we **consume at home** and in **businesses** and use to **grow food** for our local community and the world. It also plays a critical role in the health of our rivers and streams, including the ecosystems they support.

Groundwater is essential in the Salinas Valley, including the various subbasins that serve residents, businesses, farms, industries and the environment.

The Sustainable Groundwater Management Act (SGMA) Passed in September 2014



A compromise between one faction wanting State regulation of groundwater rights and one faction insisting on local management.



Locally driven

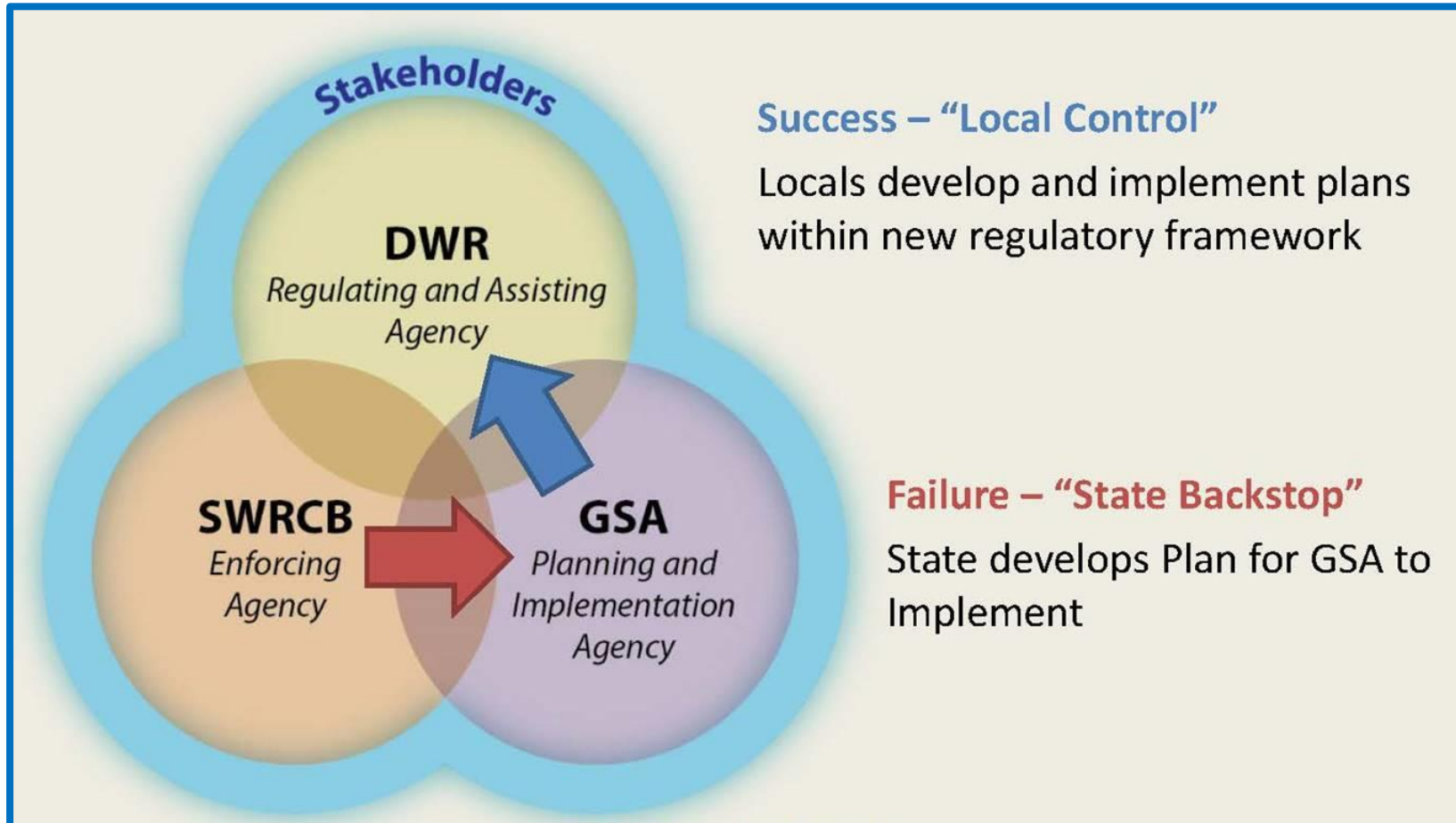
Groundwater is best managed locally, but this comes with responsibilities
Local definition of what constitutes sustainability
Locally agreed to plans for achieving sustainability



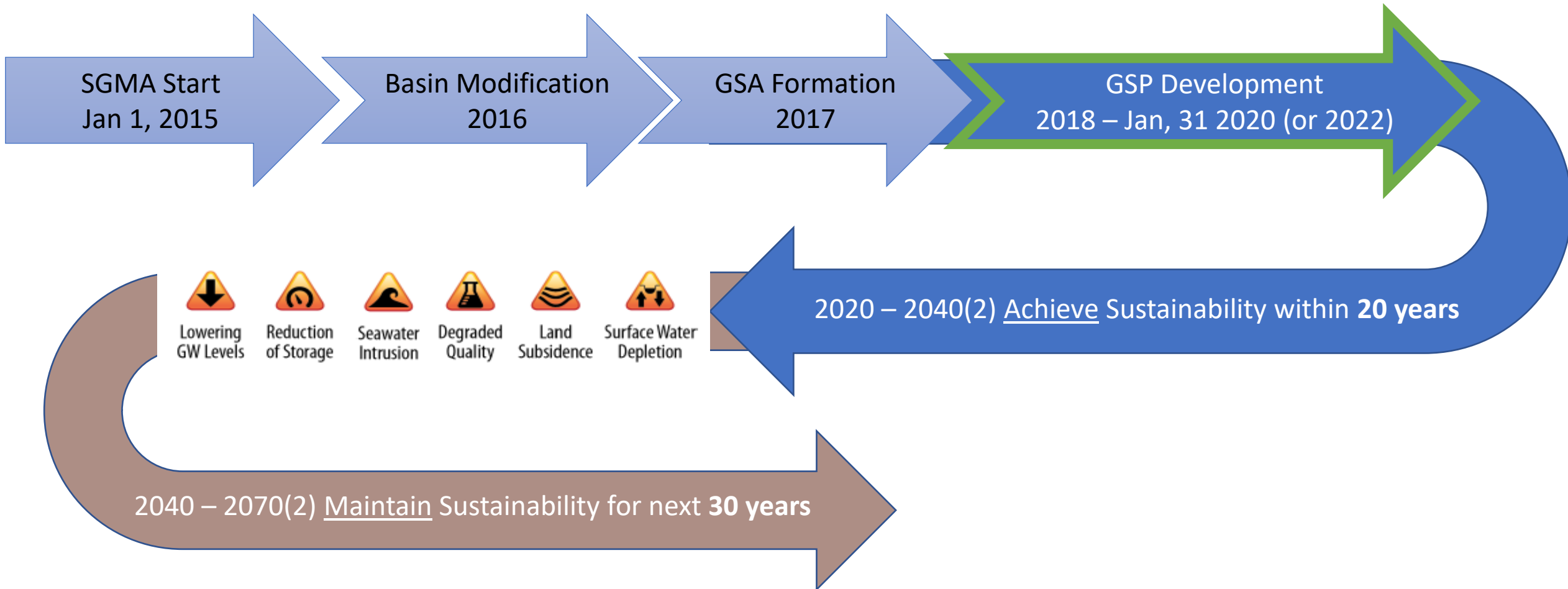
State backstop

State can temporarily take over groundwater management if a basin fails to meet certain requirement or milestones in SGMA

The Sustainable Groundwater Management Act (SGMA) Passed in September 2014



SGMA Timeline and Steps to Sustainability



Salinas Valley Basin Groundwater Sustainability Agency

Joint Powers Authority (JPA) Purpose

Developed for the purpose of forming a Groundwater Sustainable Agency (“GSA”) and achieving groundwater sustainability in the Salinas Valley Groundwater Basin.

Joint Powers Authority (JPA) Membership

County of Monterey
Monterey County Water Resources Agency
City of King
City of Soledad
Monterey One Water
Castroville Community Services District
City of Gonzalez
City of Salinas

Salinas Valley Basin Groundwater Sustainability Agency

Board of Directors

Board Member

John Bramers
Bill Lipe
Brenda Granillo
Colby Pereira
Janet Brennan
Supervisor Luis Alejo
Anthony Rocha
Steve Adams
Ron Stefani
Steve McIntyre
Caroline Chapin

Seat Representing

Agriculture, 180/400 Aquifer
Agriculture, Upper Valley Aquifer
CPUC Regulated Water Company
Agriculture, East Side Aquifer & Langley
Environment
Other GSA Eligible Entity
City of Salinas
South County Cities
DAC or Public Water System
Agriculture, Forebay Aquifer
Public Member

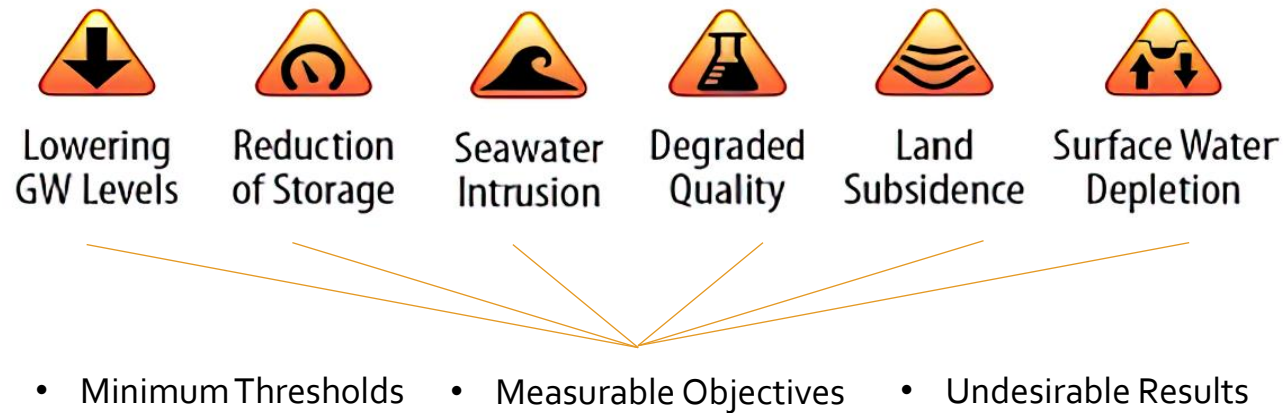
Subbasin Committees:

180/400-Foot Aquifer	Eastside
Monterey	Langley
Forebay	
Upper Valley	

Advisory Committee: Technical and advisory body to the Board. 25 members who represent a range of expertise and interests throughout the Salinas Valley Basin.

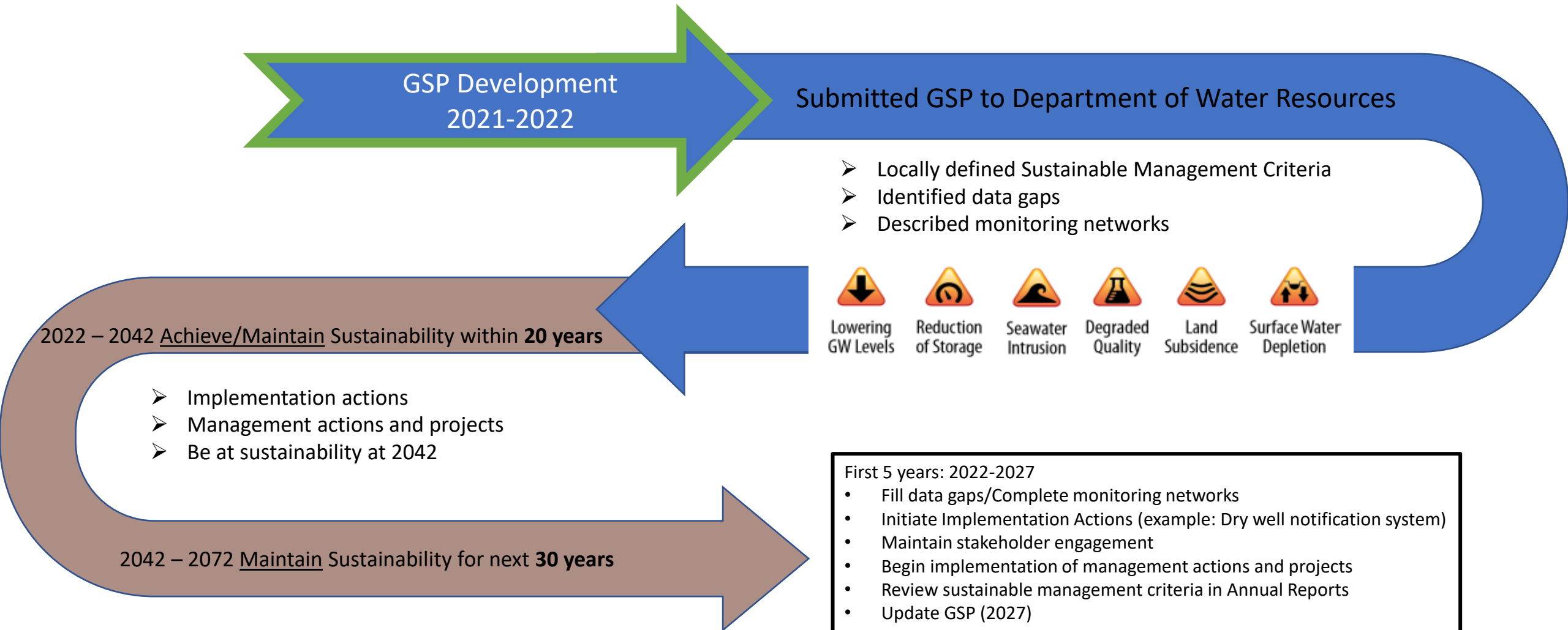
Sustainability is Outcome Based

Each of the Six Sustainability Indicators have
3 Sustainability Management Criteria Terms



Each of the Sustainability Indicators has Management Criteria Defined in the GSPs

Steps to Compliance and Sustainability



Upper Valley Subbasin

- 237,670 acres (371 square miles) and contains the municipality of King City.
- Designated by DWR as a **medium-priority subbasin**
- The **Upper Valley Subbasin** has not historically been in overdraft, nor experienced chronic lowering of groundwater levels.
- From 1980 to 2016, the Subbasin was in overdraft during only 5 years. However, there are a few areas away from the river where groundwater elevations have been declining.
- Given the Subbasin's extraction is currently close to the sustainable yield, the focus has been on a robust set of potential management actions and projects that could be undertaken if needed.

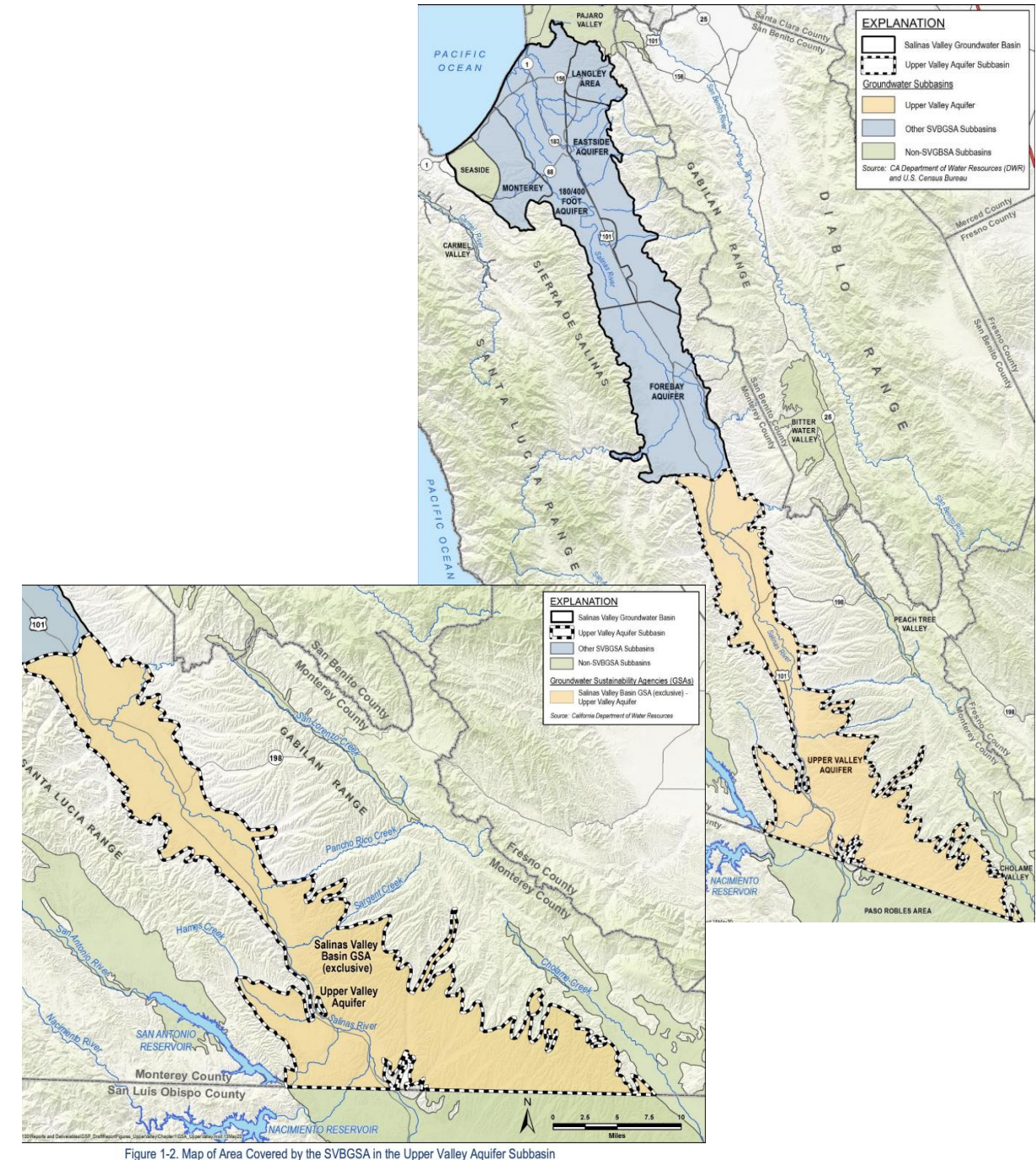


Figure 1-2. Map of Area Covered by the SVBGSA in the Upper Valley Aquifer Subbasin

Subbasin Implementation Committee:

Charge:

- Advise and provide recommendations on the implementation of the Subbasin plan.
- The intent of the Committee is to review the sustainability status of the Subbasin and ensure the Subbasin is on a path to sustainability.

Duties:

- Monitor subbasin sustainability criteria,
- prioritize subbasin specific projects and management actions,
- seek community input and identify preferred funding mechanisms.

Subbasin Committees: Summary of membership (12)

Membership: Interested stakeholders who live or work in the Subbasin and have demonstrated effective collaboration and leadership working on water related topics.

The criteria for members are to:

- Work collaboratively with others
- Commit time needed for thoughtful engagement
- Experience with collaboration and leadership working on water related topics

Structure details:

- Not to exceed 12 members
- No alternates
- Board members (less than quorum)
- Individual member seats
- Two-year commitment
- Convenes after submission of GSP to DWR
- Each Subbasin determines meeting frequency
- If vacancies, application period annually in August

Striving to promote and maintain diversity on all SVBGSA committees

Thank you!
Questions or Comments?