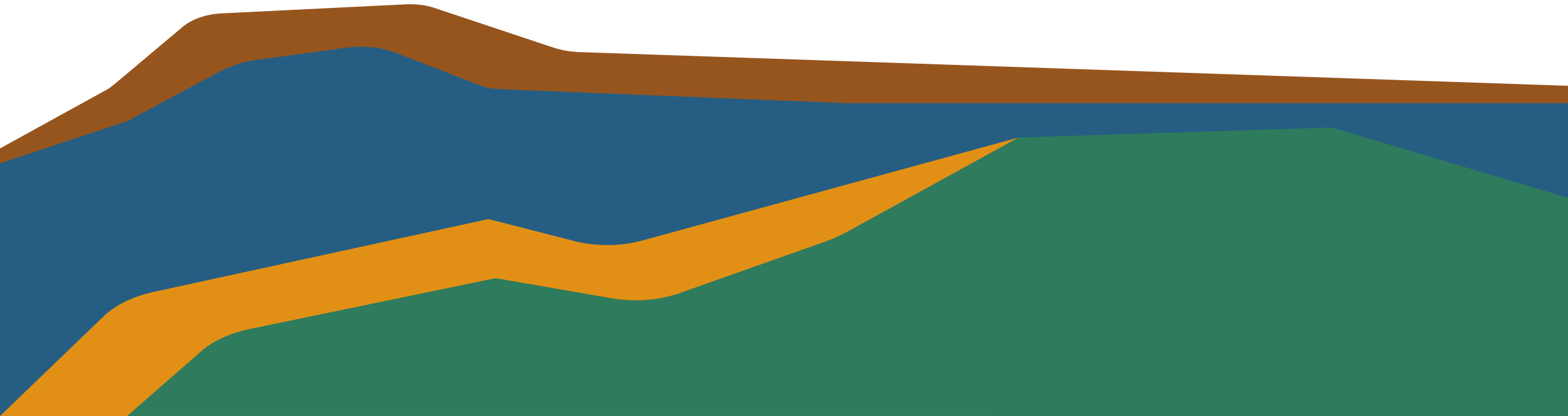




# Overview of SGMA, SVBGSA and Subbasin Implementation Committee





# Why Groundwater is Important

**Groundwater** is an essential source of water we **consume at home** and in **businesses** and use to **grow food** for our local community and the world. It also plays a critical role in the health of our rivers and streams, including the ecosystems they support.

**Groundwater** is essential in the Salinas Valley, including the various subbasins that serve residents, businesses, farms, industries and the environment.

# The Sustainable Groundwater Management Act (SGMA) Passed in September 2014



A compromise between one faction wanting State regulation of groundwater rights and one faction insisting on local management.



## Locally driven

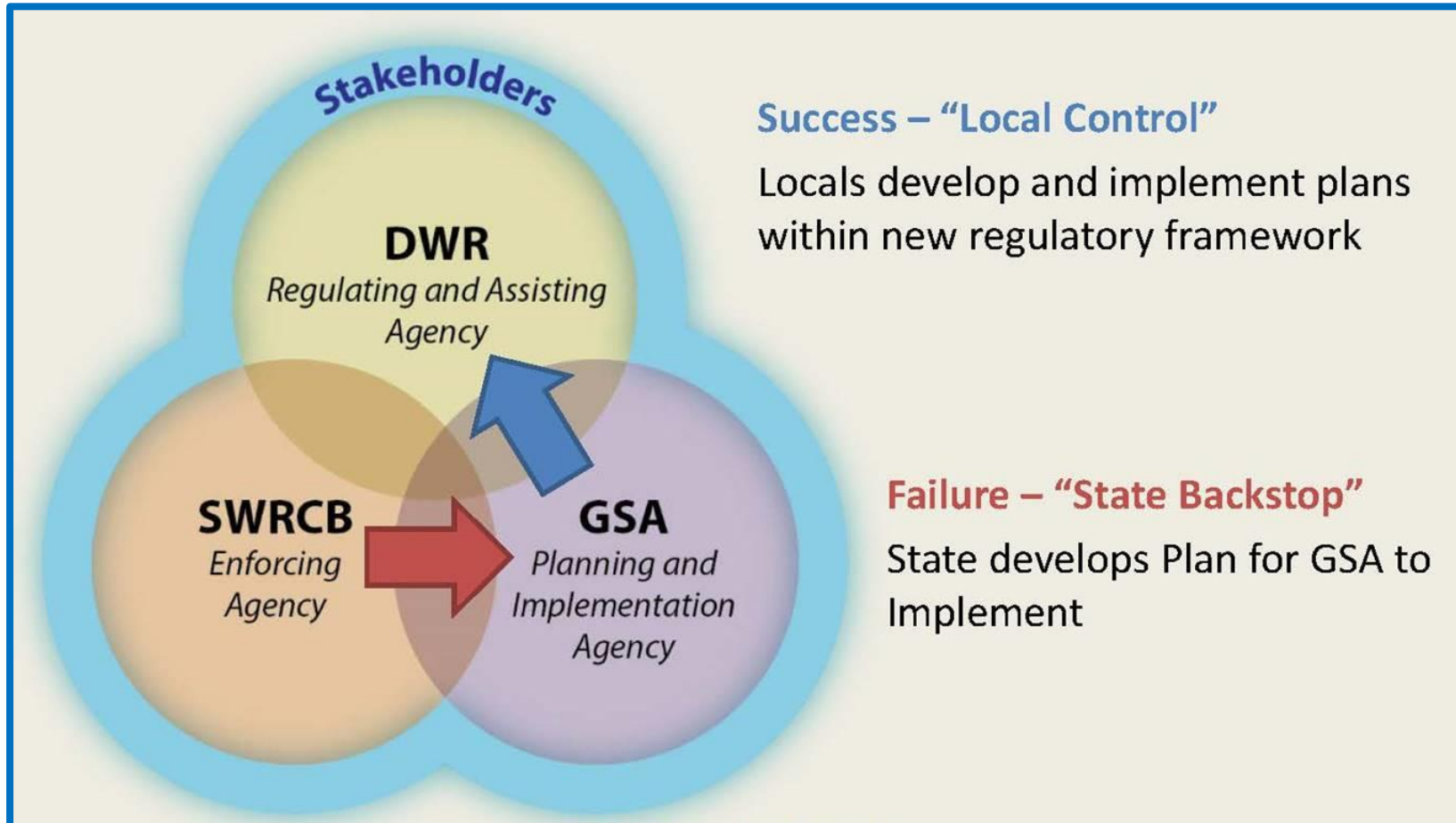
Groundwater is best managed locally, but this comes with responsibilities  
Local definition of what constitutes sustainability  
Locally agreed to plans for achieving sustainability



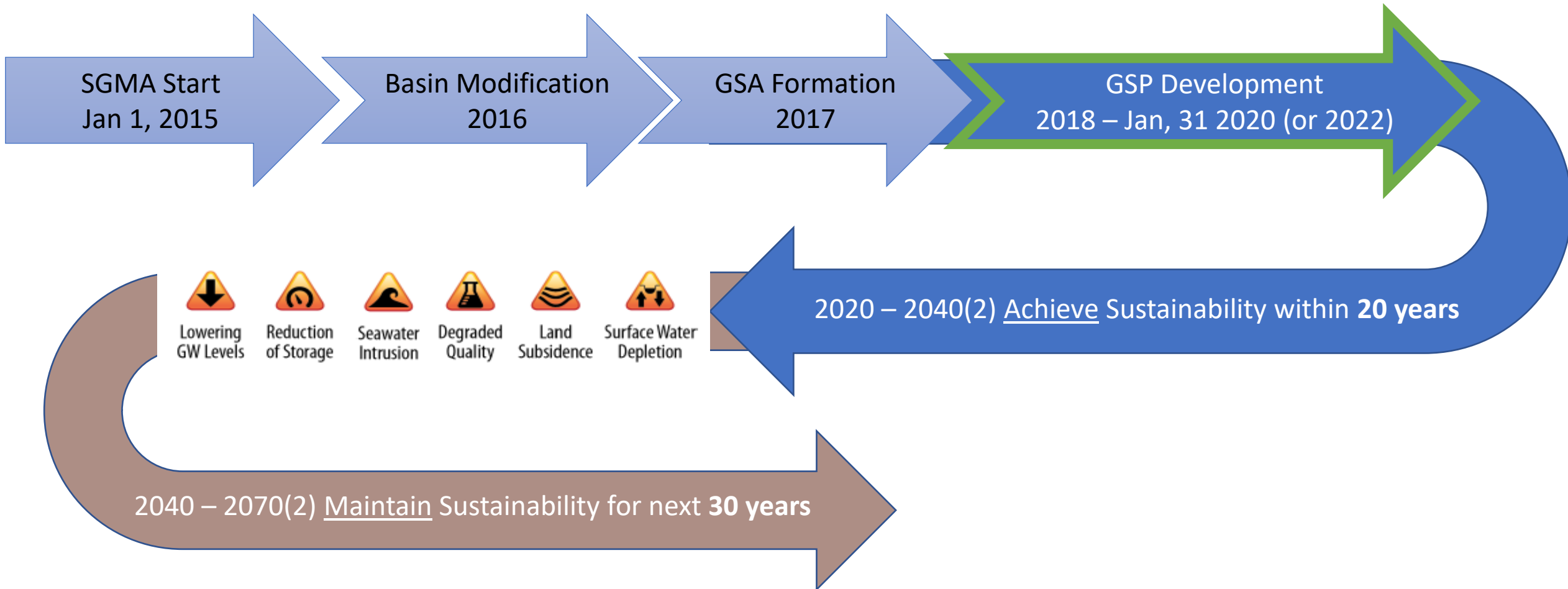
## State backstop

State can temporarily take over groundwater management if a basin fails to meet certain requirement or milestones in SGMA

# The Sustainable Groundwater Management Act (SGMA) Passed in September 2014



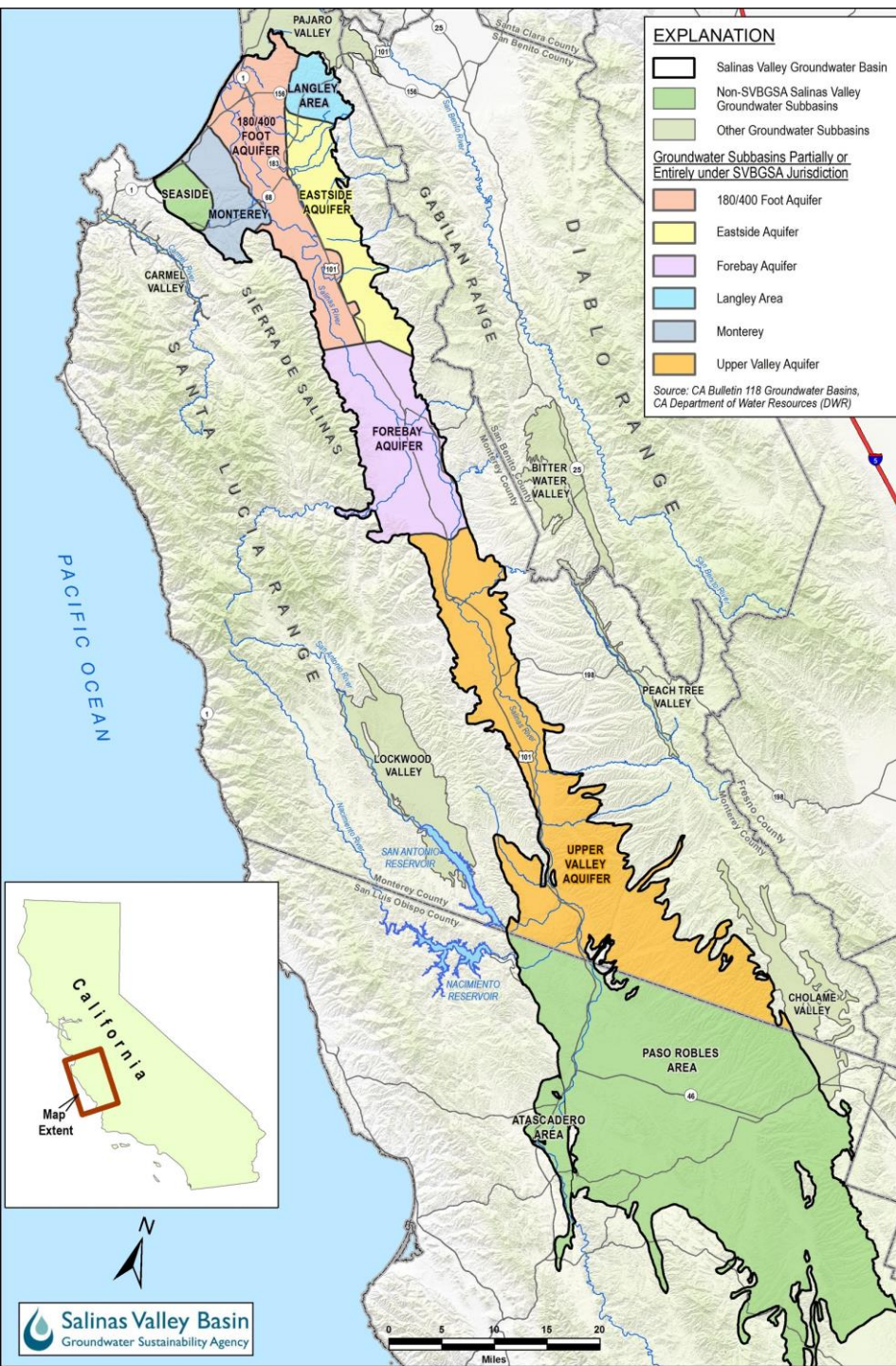
# SGMA Timeline and Steps to Sustainability





# SVBGSA

- The Salinas Valley Basin Groundwater Sustainability Agency is a Joint Powers Agreement (JPA) that was established under California's Sustainable Groundwater Management Act (SGMA).
- The State of California tasked the SVBGSA with developing Groundwater Sustainability Plans (GSP)s for the 180/400 Aquifer by 2020 and for the Eastside, Forebay, Langley, Monterey, and Upper Valley Aquifers by 2022.
- Beyond developing the GSPs, the SVBGSA must also implement these plans in order to achieve/maintain basin sustainability by 2040(2).
- The SVBGSA will also complete an Integrated Implementation Sustainability Plan for the six subbasins where the SVBGSA has jurisdiction.



# Salinas Valley Basin Groundwater Sustainability Agency

## Joint Powers Authority (JPA) Purpose

Developed for the purpose of forming a Groundwater Sustainable Agency (“GSA”) and achieving groundwater sustainability in the Salinas Valley Groundwater Basin.

### Joint Powers Authority (JPA) Membership

County of Monterey  
Monterey County Water Resources Agency  
City of King  
City of Soledad  
Monterey One Water  
Castroville Community Services District  
City of Gonzalez  
City of Salinas

### Salinas Valley Basin Groundwater Sustainability Agency

#### Board of Directors

##### Board Member

John Bramers  
Bill Lipe  
Brenda Granillo  
Colby Pereira  
Janet Brennan  
Supervisor Luis Alejo  
Anthony Rocha  
Steve Adams  
Ron Stefani  
Steve McIntyre  
Caroline Chapin

##### Seat Representing

Agriculture, 180/400 Aquifer  
Agriculture, Upper Valley Aquifer  
CPUC Regulated Water Company  
Agriculture, East Side Aquifer & Langley  
Environment  
Other GSA Eligible Entity  
City of Salinas  
South County Cities  
DAC or Public Water System  
Agriculture, Forebay Aquifer  
Public Member

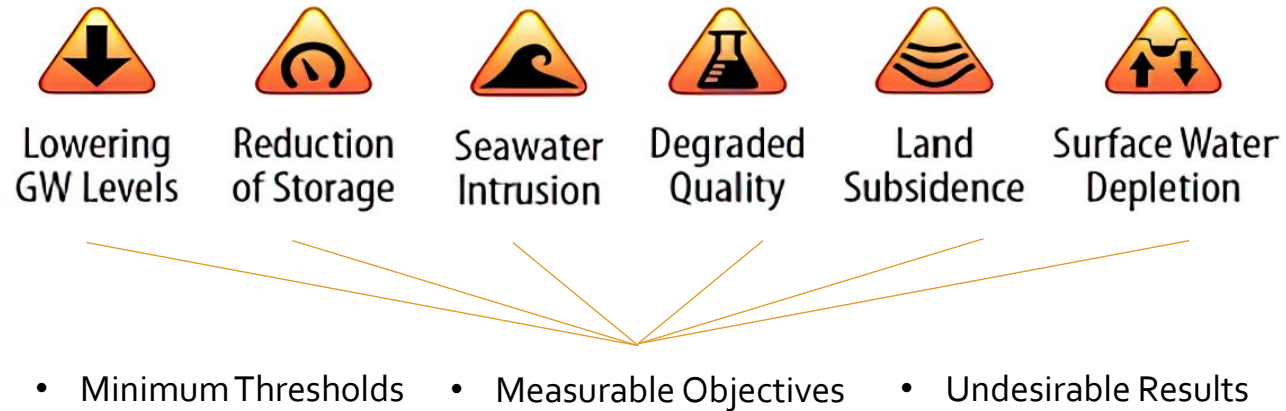
#### Subbasin Committees:

180/400-Foot Aquifer	Eastside
Monterey	Langley
Forebay	
Upper Valley	

Advisory Committee: Technical and advisory body to the Board. 25 members who represent a range of expertise and interests throughout the Salinas Valley Basin.

# Sustainability is Outcome Based

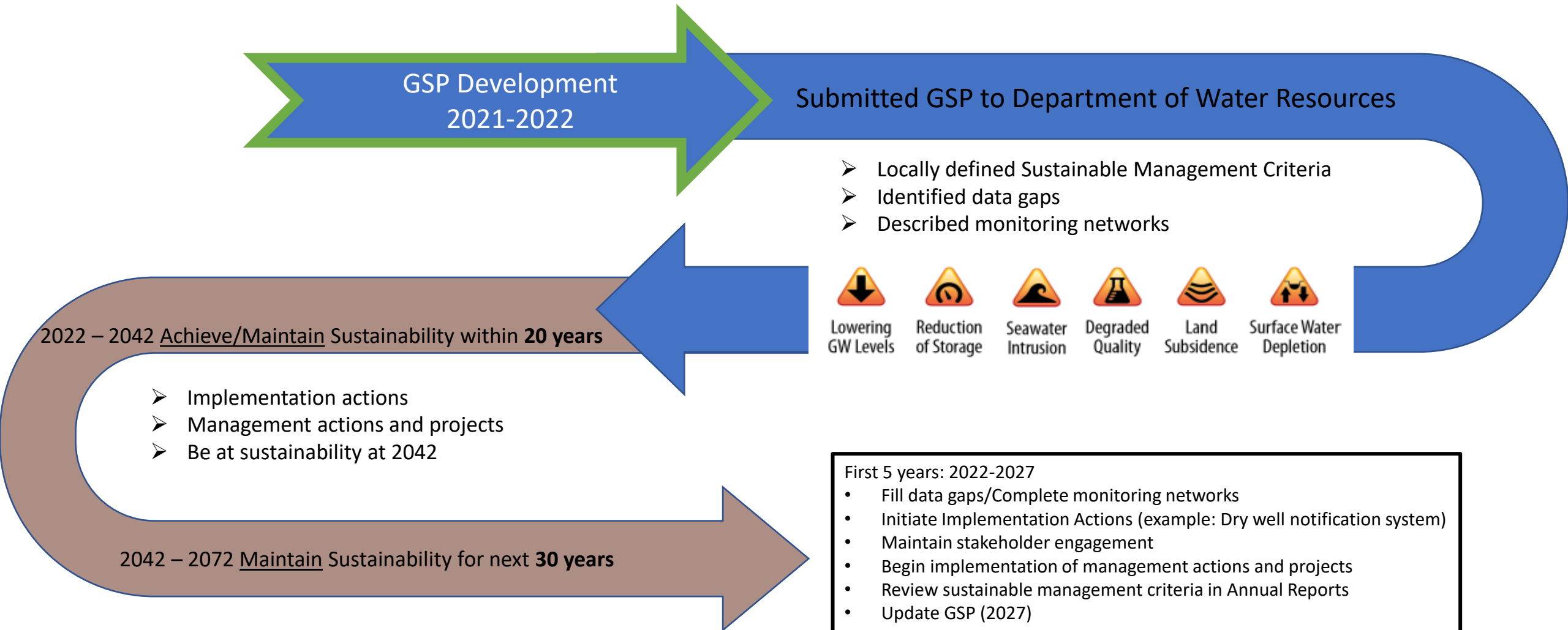
Each of the Six Sustainability Indicators have  
3 Sustainability Management Criteria Terms



**Each of the Sustainability Indicators has Management Criteria Defined in the GSPs**



# Steps to Compliance and Sustainability



# Eastside Subbasin

- 57,500 acres (90 square miles) that contains portions of the municipalities of Salinas and Gonzales. Chualar, in unincorporated Monterey County is within the Subbasin.
- Designated by DWA as a [high-priority subbasin](#)
- The **Eastside Subbasin** has experienced chronic lowering of groundwater elevations and has historically been in overdraft (10,000 AF/yr.).
- Issues identified include:
  - Limited recharge and increased groundwater extraction
  - Decline of elevation and storage
  - Nitrates in groundwater
- The GSP for this Subbasin includes potential projects and management actions that are sufficient to reach sustainability by 2042.

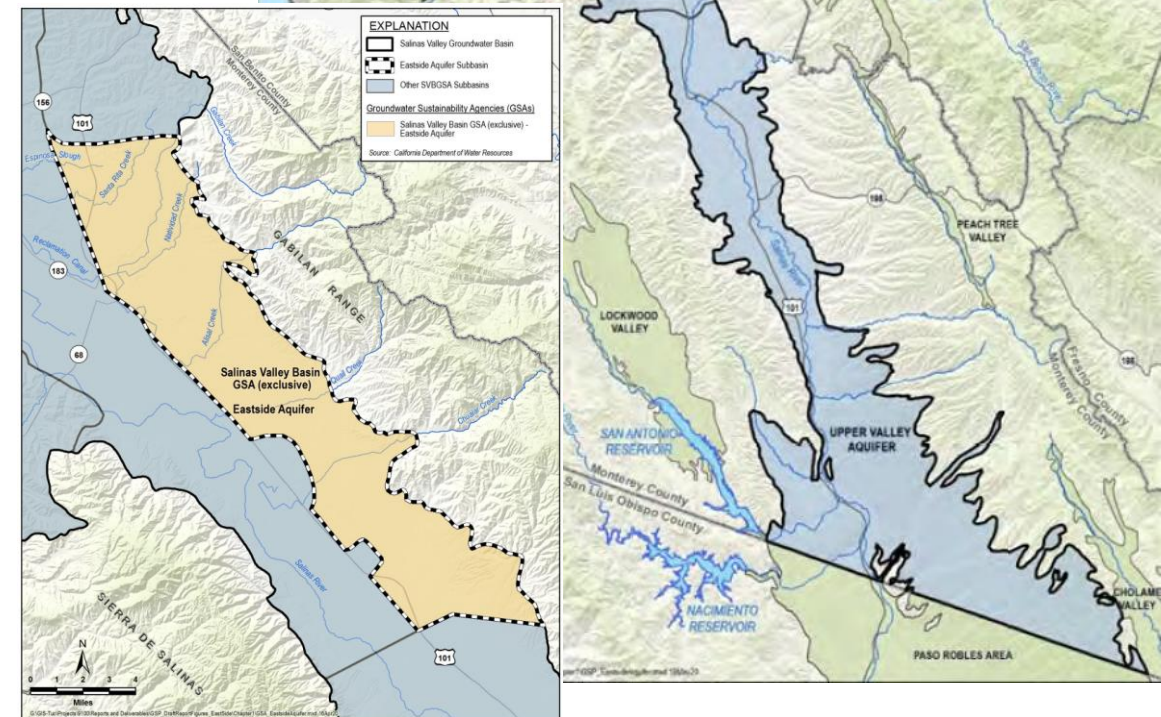
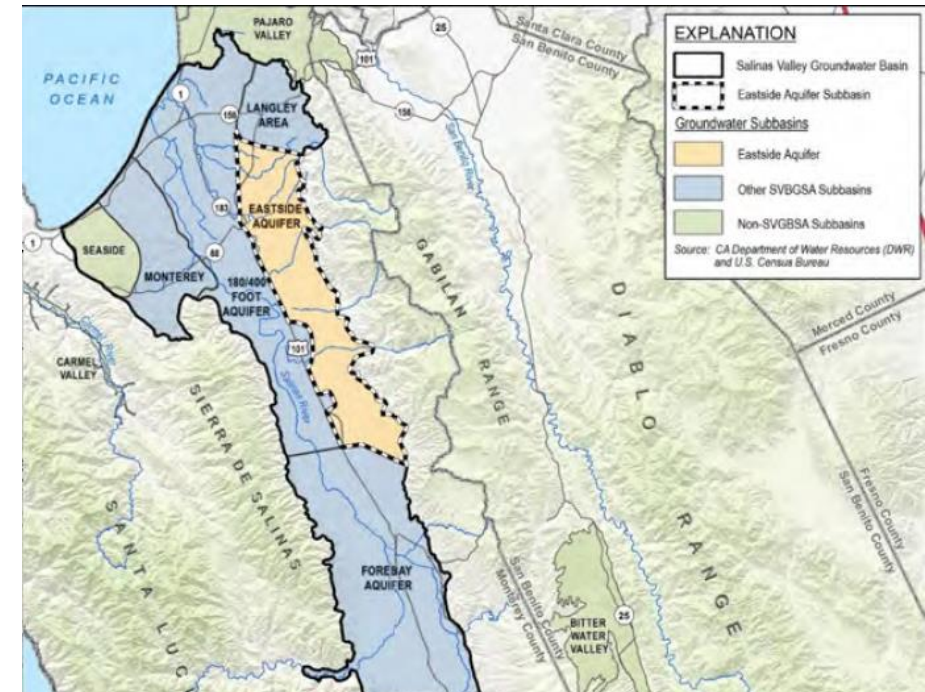


Figure 1-2. Map of Area Covered by the SVBGS in the Eastside Aquifer Subbasin

# Subbasin Implementation Committee:

## **Charge:**

- Advise and provide recommendations on the implementation of the Subbasin plan.
- The intent of the Committee is to review the sustainability status of the Subbasin and ensure the Subbasin is on a path to sustainability.

## **Duties:**

- Monitor subbasin sustainability criteria,
- prioritize subbasin specific projects and management actions,
- seek community input and identify preferred funding mechanisms.

# Subbasin Committees: Summary of membership (12)

Membership: Interested stakeholders who live or work in the Subbasin and have demonstrated effective collaboration and leadership working on water related topics.

The criteria for members are to:

- Work collaboratively with others
- Commit time needed for thoughtful engagement
- Experience with collaboration and leadership working on water related topics

Structure details:

- Not to exceed 12 members
- No alternates
- Board members (less than quorum)
- Individual member seats
- Two-year commitment
- Convenes after submission of GSP to DWR
- Each Subbasin determines meeting frequency
- If vacancies, application period annually in August

*Striving to promote and maintain diversity on all SVBGSA committees*



Thank you!  
Questions or Comments?