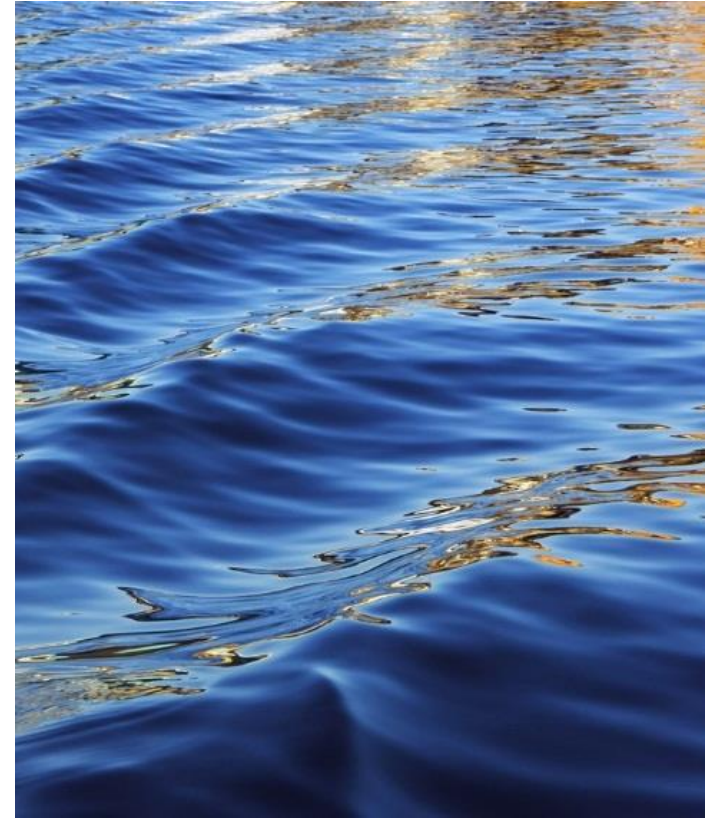




Committees for Implementation of GSPs

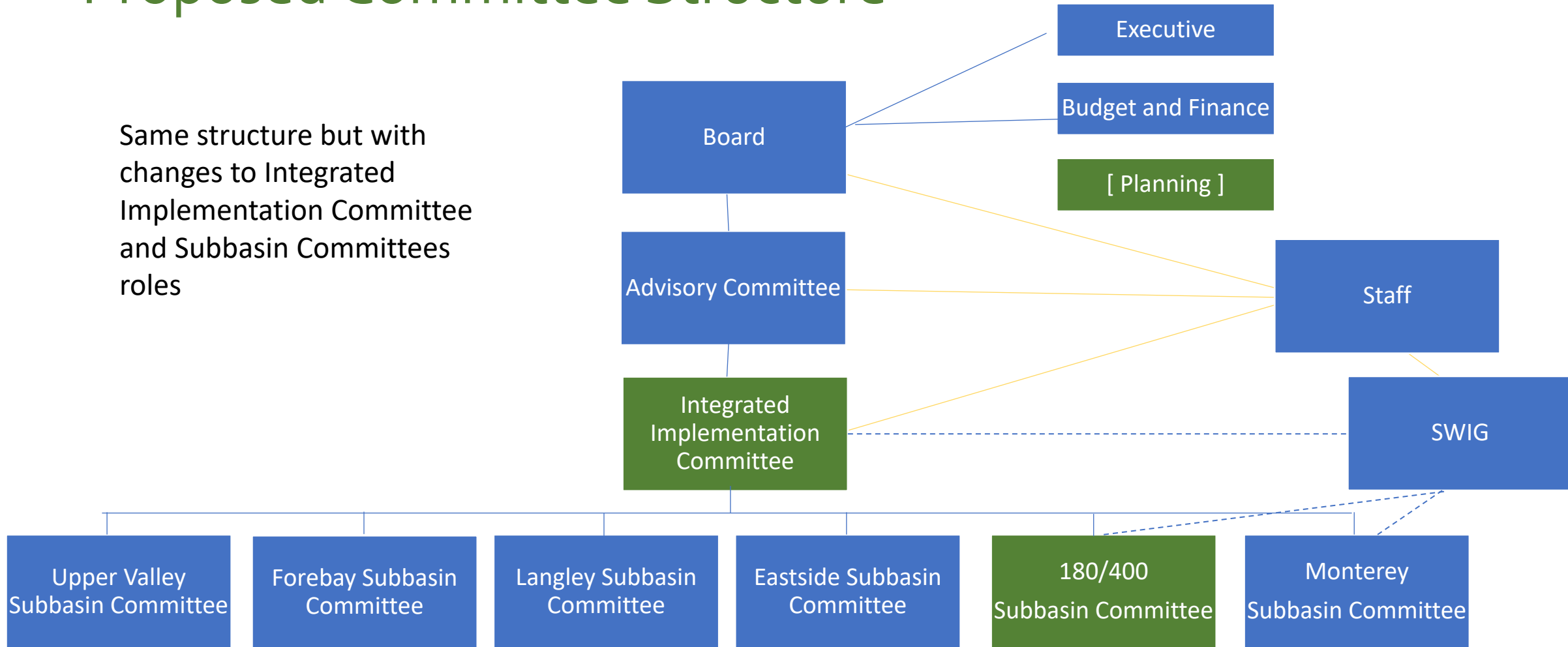
Board of Directors

7/8/2021



Proposed Committee Structure

Same structure but with changes to Integrated Implementation Committee and Subbasin Committees roles



Strive to promote and maintain diversity on all SVGSA Committees

Integrated Implementation Committee: Summary of proposed role

Charge:

- Provide input and recommendations to the Advisory Committee.
- Guide development of Integrated Implementation Plan, basin wide/regional projects and management actions and resolve neighboring basin concerns.
- The intent of the Committee is to ensure the Salinas Valley Basin is on a cohesive path to sustainability.

Duties: The purpose of the Integrated Implementation Committee is to consolidate subbasin specific, basin-wide, and regional SGMA implementation projects to ensure equity and efficient use of GSA resources and resolve neighboring basin concerns.

Integrated Implementation Committee: Summary of proposed membership (9)

Membership: Integrated Committee members represent one nominated representative from each of the following organizations or committees:

- 180/400-Foot Aquifer Subbasin Committee
- Eastside Aquifer Subbasin Committee
- Monterey Subbasin Committee
- Langleys Area Subbasin Committee
- Forebay Aquifer Subbasin Committee
- Upper Valley Aquifer Subbasin Committee
- Monterey County Water Resources Agency
- Arroyo Seco Groundwater Sustainability Agency
- Marina Coast Water District Groundwater Sustainability Agency

Structure details:

- Not to exceed 9 ~~±5~~ members
- No alternates
- Board members (less than quorum)
- Committee nominated/organization member seats
- Committee or organization fills seats if there is a vacancy
- Meeting participation tracked and required
- Convenes March 2022

Subbasin Committees: Summary of proposed role

Charge:

- Advise and provide recommendations on the implementation of the respective subbasin plans to the Implementation Committee or Advisory Committee (as appropriate).
- The intent of the Committee is to review the sustainability status of each Subbasin and ensure each Subbasin is on a path to sustainability.

Duties: Monitor subbasin sustainability criteria, prioritize subbasin specific projects and management actions, seek community input and identify preferred funding mechanisms.

Subbasin Committees:

Summary of proposed membership (12)

Membership: Interested stakeholders who have demonstrated effective collaboration and leadership working on water related topics.

The criteria for members are to:

- Work collaboratively with others
- Commit time needed for thoughtful engagement
- Experience with collaboration and leadership working on water related topics

Structure details:

- Not to exceed 12 members
- No alternates
- Board members (less than quorum)
- Individual member seats
- Two-year commitment
- Convenes after submission of GSP to DWR
- Each Subbasin determines meeting frequency
- If vacancies, application period annually in August



QUESTIONS

