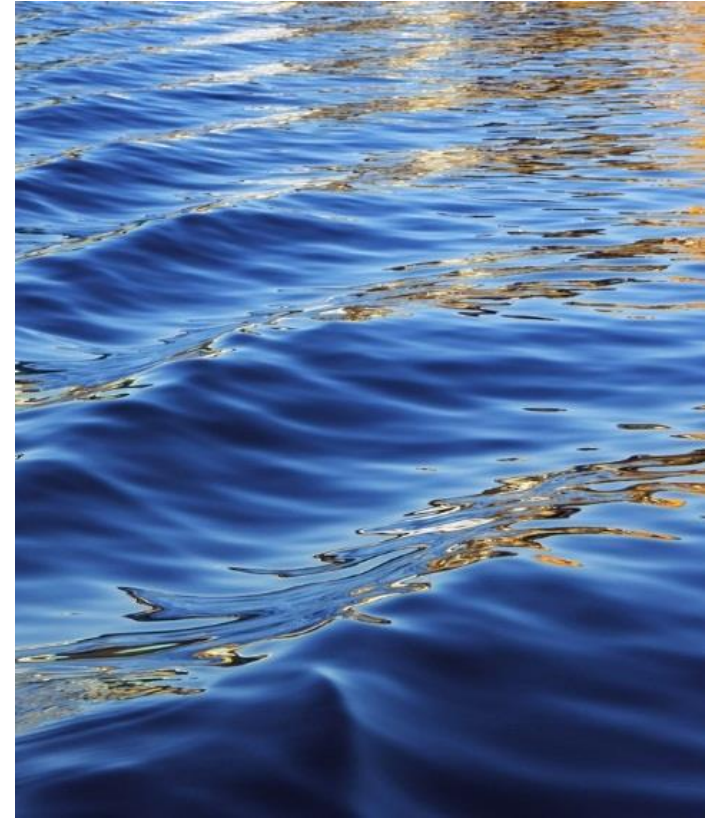




# Committees for Implementation of GSPs

Advisory Committee Meeting

5/20/2021



# SVBGSA Stakeholder Engagement

- Subbasin Planning Committees
- Board of Directors and Advisory Committee Input
- Outreach and education workshops
- Website and email
- Public engagement
- Developed underrepresented communities' engagement strategy

**GOAL: Maintain engaged stakeholders throughout implementation of GSPs.**

# Timeline

## Implementation Chapters:

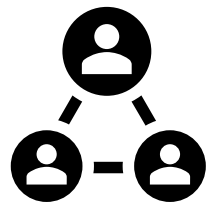
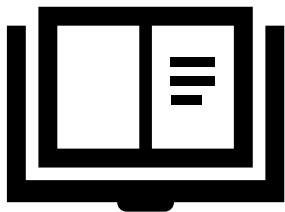
- Organize tasks, Tell the story of success, Our roadmap
- Includes general ideas about our stakeholder process/engagement for the future.

## Strategic Planning:

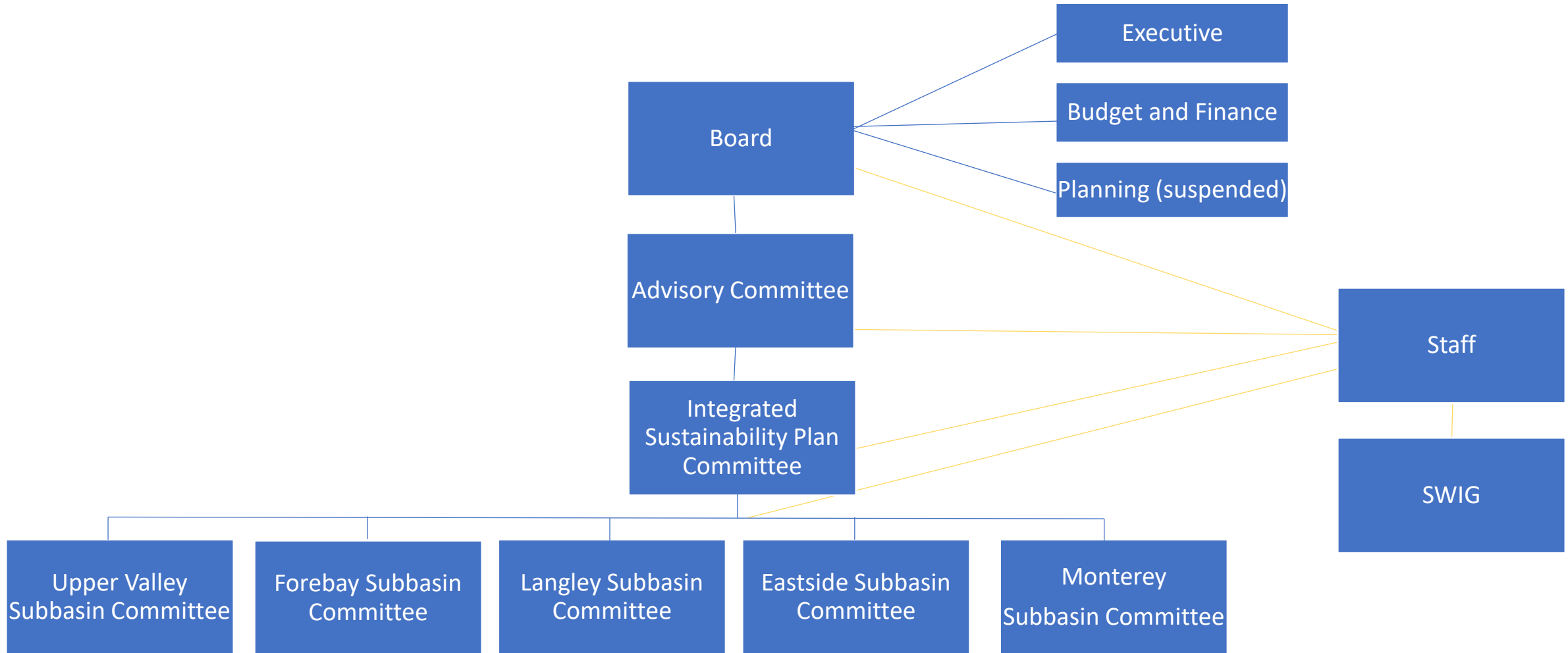
- Three major areas being considered: funding, partnerships and structure

## 180/400-Foot Aquifer GSP Implementation:

- Stakeholder requests for similar committee structure for 180/400-Foot Subbasin

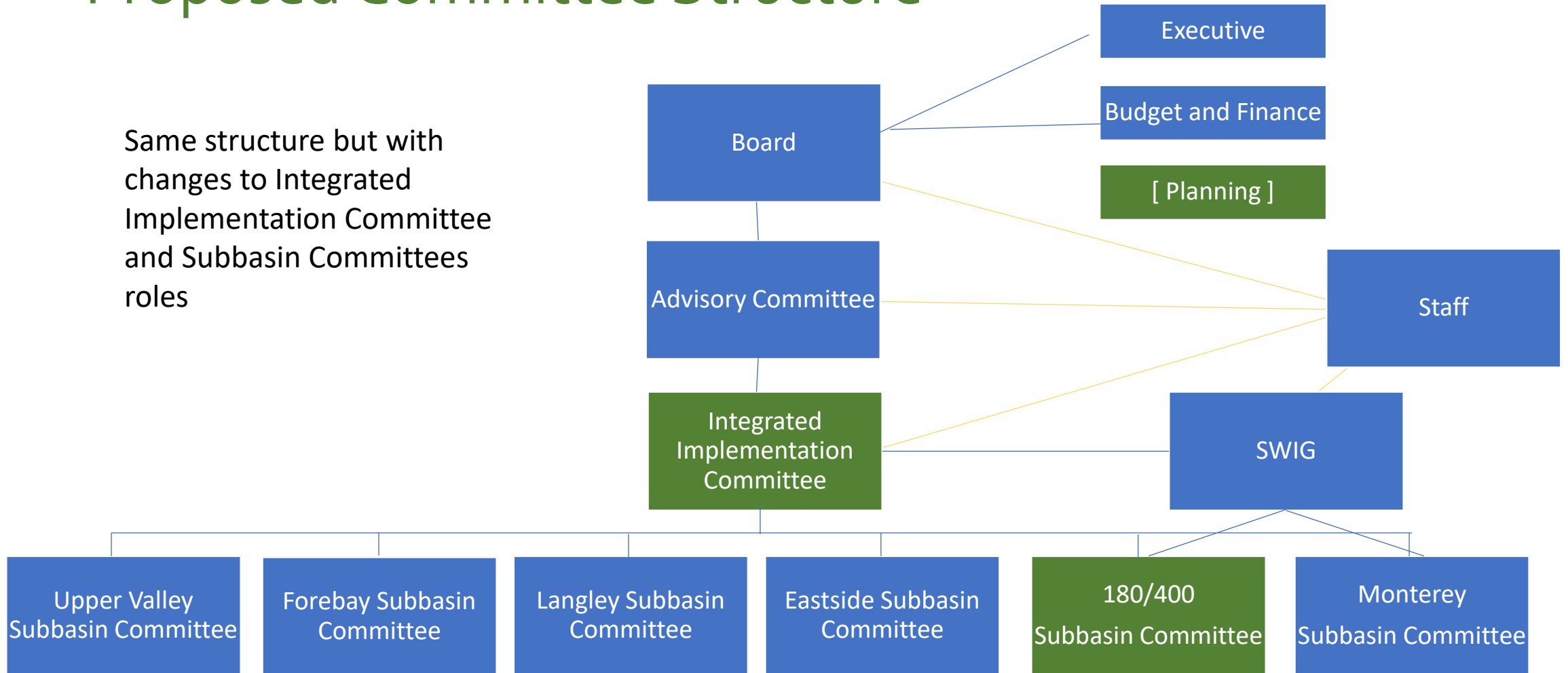


# Current Committee Structure



# Proposed Committee Structure

Same structure but with changes to Integrated Implementation Committee and Subbasin Committees roles



# Groundwater Sustainability Plans Overview

<b>DRAFT</b>	<b>Original Plan</b>	<b>Current Status</b>	<b>Future Proposal</b>	<b>Proposed Changes</b>
<b>Board</b>	Approve of GSPs		Approve GSP updates	
<b>Advisory Committee</b>	Provide Board recommendations on development, adoption or amendment of the GSPs		Provide Board recommendations on development or amendment of the GSPs	
<b>Integrated Sustainability Committee</b>	Provide advice and recommendations to the AC regarding the content of the subbasin plans related to the Integrated Sustainability Plan.	Greater need for integration focused on implementation.	<b>Integrated Implementation Committee:</b> Provide advice and recommendations to the AC regarding implementation of the GSPs.	ISP Committee becomes Integrated Implementation Committee
<b>Subbasin Committees</b>	Advise and provide recommendations on the content of the respective subbasin plans to the Integrated Sustainability Plan Committee.	ISP Committee not yet needed to convene. Chapters to AC and then to Board.	Advise and provide recommendations on the implementation of the respective Subbasin GSP to the Implementation Committee or AC.	Subbasin specific implementation.



# Advisory Committee: Summary of current role

**Charge:** Provide input and recommendations to the Board. At the request of the Board, provide input on GSP development, implementation and Agency policies. The intent of Committee is to provide community perspective and inclusive participation in the Agency.

**Duties:** The purpose of the Advisory Committee is to incorporate community and stakeholder interests into consensus recommendations on SGMA implementation in the Salinas Valley Groundwater Basin for the Board to consider in its decision-making process.

# FOR DISCUSSION TODAY:

## Integrated Implementation Committee: Summary of proposed role

**Charge:** Provide input and recommendations to the Advisory Committee. Guide development of Integrated Implementation Plan, basin wide/regional projects and management actions and resolve neighboring basin concerns. The intent of the Committee is to ensure the Salinas Valley Basin is on a cohesive path to sustainability.

**Duties:** The purpose of the Integrated Implementation Committee is to consolidate subbasin specific, basin-wide, and regional SGMA implementation projects to ensure equity and efficient use of GSA resources and resolve neighboring basin concerns.



# FOR DISCUSSION TODAY:

## Subbasin Committees: Summary of proposed future role

**Charge:** Advise and provide recommendations on the implementation of the respective subbasin plans to the Implementation Committee or AC (as appropriate). The intent of the Committee is to review the sustainability status of each Subbasin and ensure each Subbasin is on a path to sustainability.

**Duties:** Monitor subbasin sustainability criteria, prioritize subbasin specific projects and management actions, seek community input and identify preferred funding mechanisms.

<b>DRAFT</b>	<b>Inter-basin Coordination</b>	<b>Projects and MAs</b>	<b>Fee Proposals</b>	<b>Community Outreach</b>
<b>Advisory Committee</b>	Provide recommendations to the Board on Inter-basin Coordination	Provide recommendations to the Board on Projects and MAs	Provide recommendations to the Board on fee proposals	Provide recommendation to the Board on community outreach
<b>Integrated Implementation Committee</b>	Guide Integrated Implementation Plan	Guide basin wide or regional projects/MA <ul style="list-style-type: none"> <li>➤ Consolidate subbasin specific projects/MA</li> <li>➤ ID efficiencies and opportunities</li> <li>➤ Consider equity of SVBGSA resources across subbasins</li> </ul>	For basin-wide or regional projects or MAs evaluate funding mechanisms, provide input if regulatory fee is selected	Support basin wide community outreach
<b>Subbasin Committees</b>	Provide subbasin specific input to implementation committee	Guide subbasin specific projects/MAs and prioritization. <ul style="list-style-type: none"> <li>➤ Community support</li> <li>➤ Evaluate funding mechanisms</li> </ul>	For subbasin specific projects and MAs evaluate funding mechanisms, provide input if regulatory fee is selected	Support subbasin community outreach



<b>DRAFT</b>	<b>Sustainability</b>	<b>Conflict Resolution</b>	<b>Data</b>	<b>Modeling</b>
<b>Advisory Committee</b>	Provide recommendations to the Board on sustainability goals and objectives	Provide input to Board	Provide recommendations to the Board on monitoring programs	Provide recommendation to the Board on modeling scenarios
<b>Integrated Implementation Committee</b>	Monitor progress of all subbasins to achieve sustainability	Resolve neighboring subbasin/basin concerns	Review Basin wide data	Receive modeling results and provide comments/evaluation to AC
<b>Subbasin Committees</b>	Review annual reports and identify actions if needed	Provide subbasin specific data/concerns about ability to reach sustainability in 20 years	Review subbasin specific data	Receive modeling updates

Additional Advisory Committee Roles:

- Provide recommendations to the Board on local regulations to implement SGMA
- General advise

# Advisory Committee: Summary of current role

**Charge:** Provide input and recommendations to the Board. At the request of the Board, provide input on GSP development, implementation and Agency policies. The intent of Committee is to provide community perspective and inclusive participation in the Agency.

**Duties:** The purpose of the Advisory Committee is to incorporate community and stakeholder interests into consensus recommendations on SGMA implementation in the Salinas Valley Groundwater Basin for the Board to consider in its decision-making process.

**Membership:** Advisory Committee members represent the diverse interests of GSA-eligible agencies and groundwater users. The criteria for Advisory Committee members are to:

- Serve as a strong effective advocate
- Work collaboratively with others
- Commit time needed for ongoing discussions
- Collectively reflect diversity of interests
- Maintain Committee size to support focused deliberations

## Membership details:

- Not to exceed 25 members
- Members plus two alternates
- Board members (less than quorum)
- Organization/Interest based seats
- Meeting participation tracked and required

# FOR DISCUSSION TODAY:

## Integrated Implementation Committee: Summary of proposed role

**Charge:** Provide input and recommendations to the Advisory Committee. Guide development of Integrated Implementation Plan, basin wide/regional projects and management actions and resolve neighboring basin concerns. The intent of the Committee is to ensure the Salinas Valley Basin is on a cohesive path to sustainability.

**Duties:** The purpose of the Integrated Implementation Committee is to consolidate subbasin specific, basin-wide, and regional SGMA implementation projects to ensure equity and efficient use of GSA resources and resolve neighboring basin concerns.

**Membership:** Integrated Implementation Committee members represent nominated representatives from each subbasin committee, the SWIG, MCWRA, and three AC members, one representative from ASGSA and one from MCWDGSA . The criteria for members are to:

- Work collaboratively with others
- Commit time needed for ongoing discussions
- AC provides balance for membership

### Membership:

- Not to exceed 15 members
- No alternates
- Board members (less than quorum)
- Committee nominated/organization member seats
- Meeting participation tracked and required
- Convenes October 2021

# FOR DISCUSSION TODAY:

## Subbasin Committees: Summary of proposed future role

**Charge:** Advise and provide recommendations on the implementation of the respective subbasin plans to the Implementation Committee or AC (as appropriate). The intent of the Committee is to review the sustainability status of each Subbasin and ensure each Subbasin is on a path to sustainability.

**Duties:** Monitor subbasin sustainability criteria, prioritize subbasin specific projects and management actions, seek community input and identify preferred funding mechanisms.

**Membership:** Subbasin Committee members are interested stakeholders. The criteria for members are to:

- Work collaboratively with others
- Commit time needed for ongoing discussions
- Additional ideas...

### Membership:

- Not to exceed 12? members
- No alternates
- Board members? (less than quorum)
- Individual member seats
- Two year commitment
- Convenes March 2022 and each Subbasin determines meeting frequency
- If vacancies, application period annually in August



# QUESTIONS

