

# Salinas Valley Basin GSA

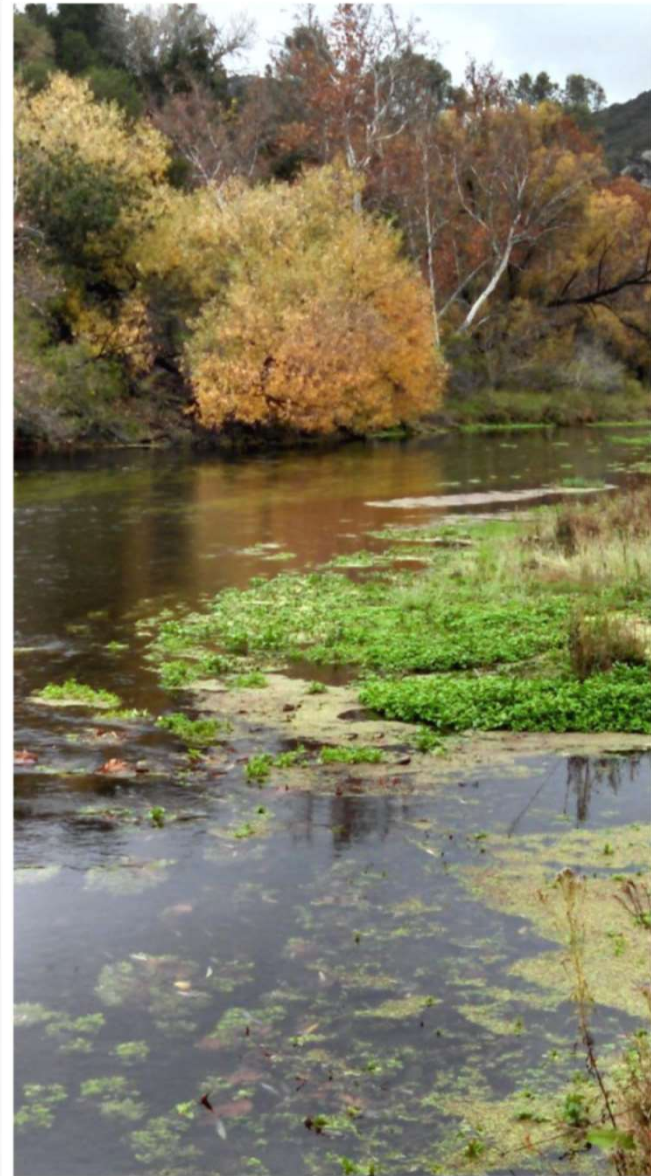
## SMC Update

Presented to Upper Valley  
Subbasin Committee  
December 7, 2020

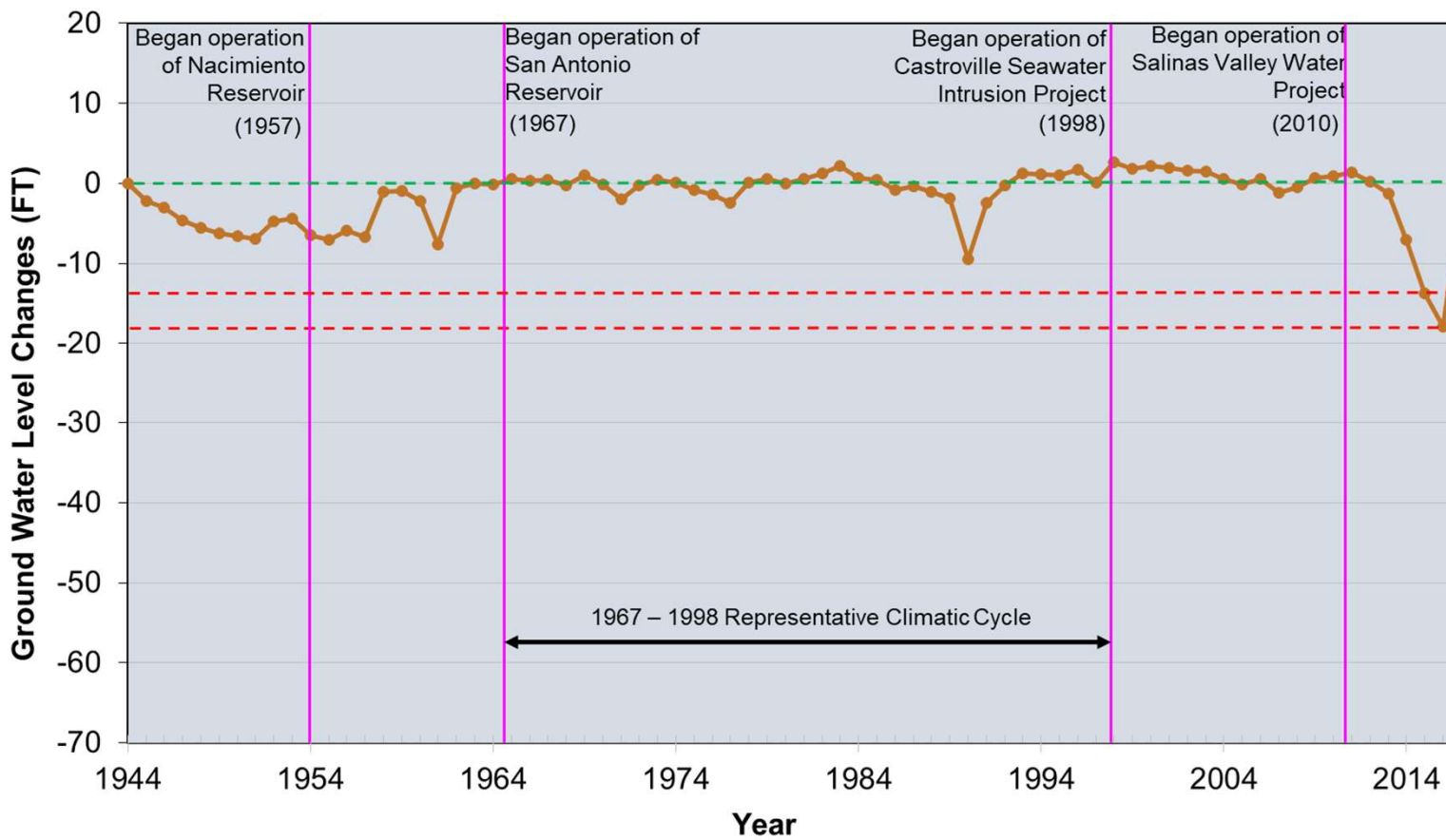
Prepared by



# SMC: Groundwater Levels



# SMCs: Groundwater Levels



Measurable Objective = 2005 or 2012 Groundwater Elevations

Option 1: Minimum Threshold = 2015 Groundwater Elevations

Option 2: Minimum Threshold = 2016 Groundwater Elevations