


Salinas Valley Basin GSA

SMC Options & Data



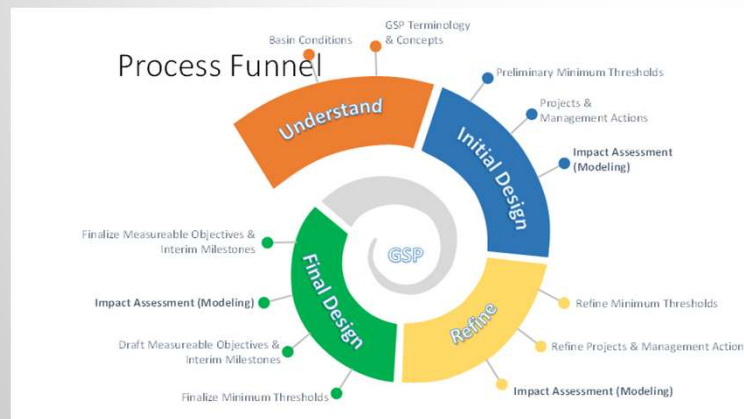
Presented to Langley Area
Subbasin Committee
November 4, 2020

Prepared by



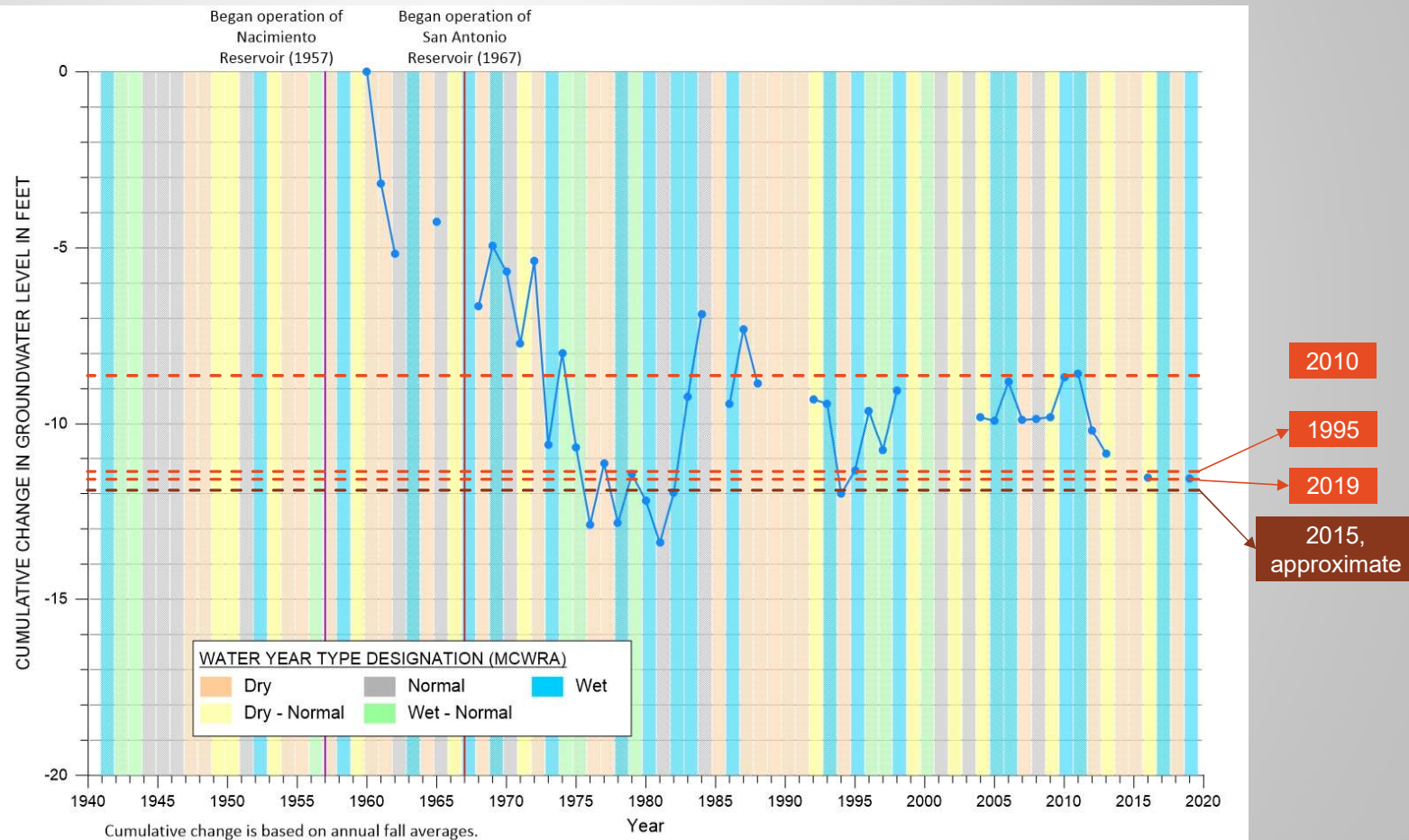
Process

- ▶ July 5 Subbasin Committee Meeting – received overview of SMCs in the Monterey Subbasin
- ▶ July 28 workshop – provided greater detail on SMC terminology and concepts
- ▶ Sept 2 Subbasin Committee Meeting – discussed and gave direction on SMCs in the Monterey GSP
- ▶ Sept/Oct – SVBGSA and MCWD worked jointly on SMCs
- ▶ Nov 4 Subbasin Committee Meeting – received SMC update and discussed SMC options
- ▶ Nov 4 – received draft SMC chapter



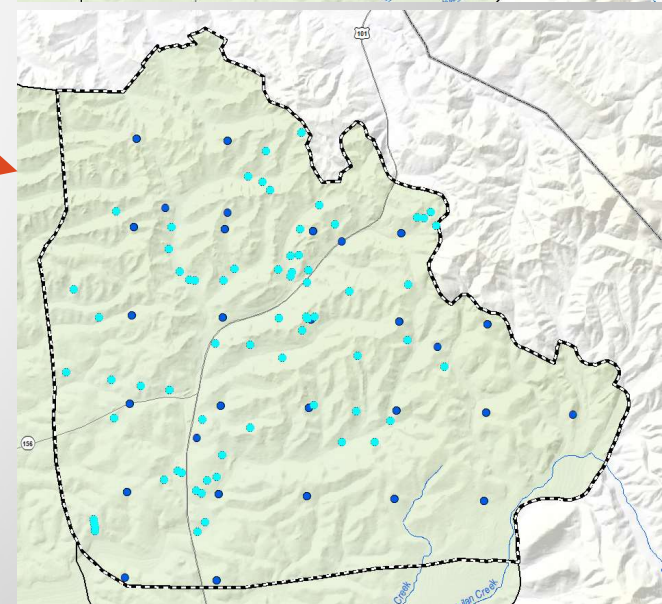
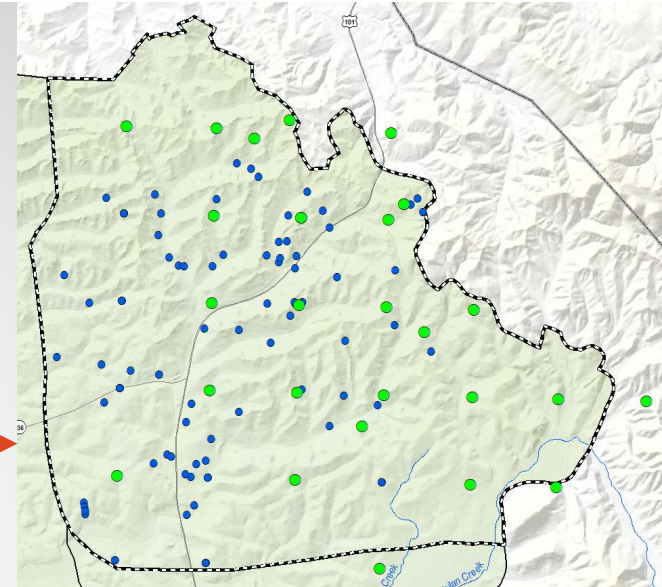
Opinions/guidance will be included in boxes

Groundwater Levels MT SMC Option



Domestic Well Analysis

- Determined which wells are drilled in granite
 - Made a new basin bottom surface using about 30 well logs (green)
 - Extracted the depth-to-granite for all wells based on new surface
- Only used wells with location accuracy >50ft (light blue)
 - Wells that have centroid of section as location not used



	1995	2010	2015	2019
Impacted Domestic Wells (with 25ft Buffer)	8	6	5	5
Total Wells (with location accuracy >50ft and not in granite)	53	53	53	53
Percentage	15%	11%	9%	9%



Additional Data

Zone 8 overlay – could not find

Watersheds

Ag acres and water use

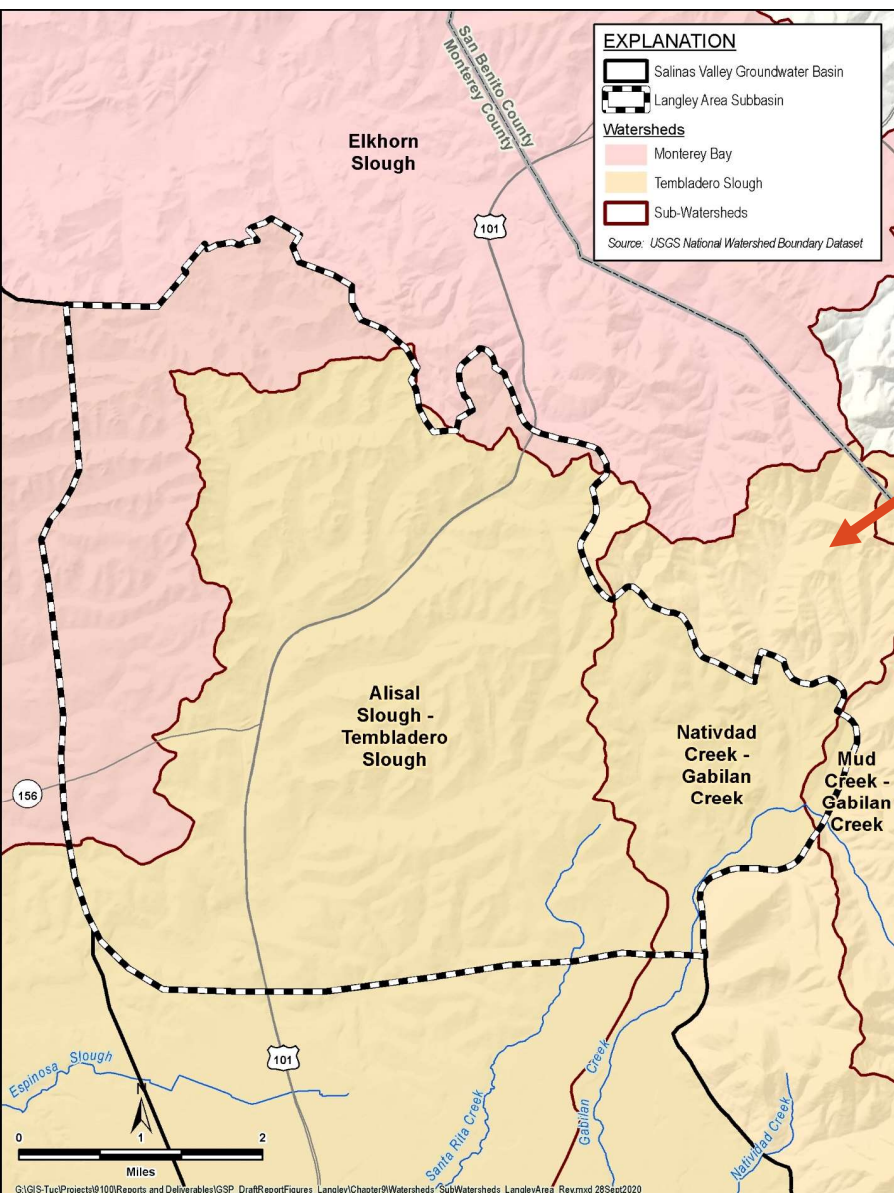
Additional well data/hydrographs – see insert



Zone 8 overlay in Langley

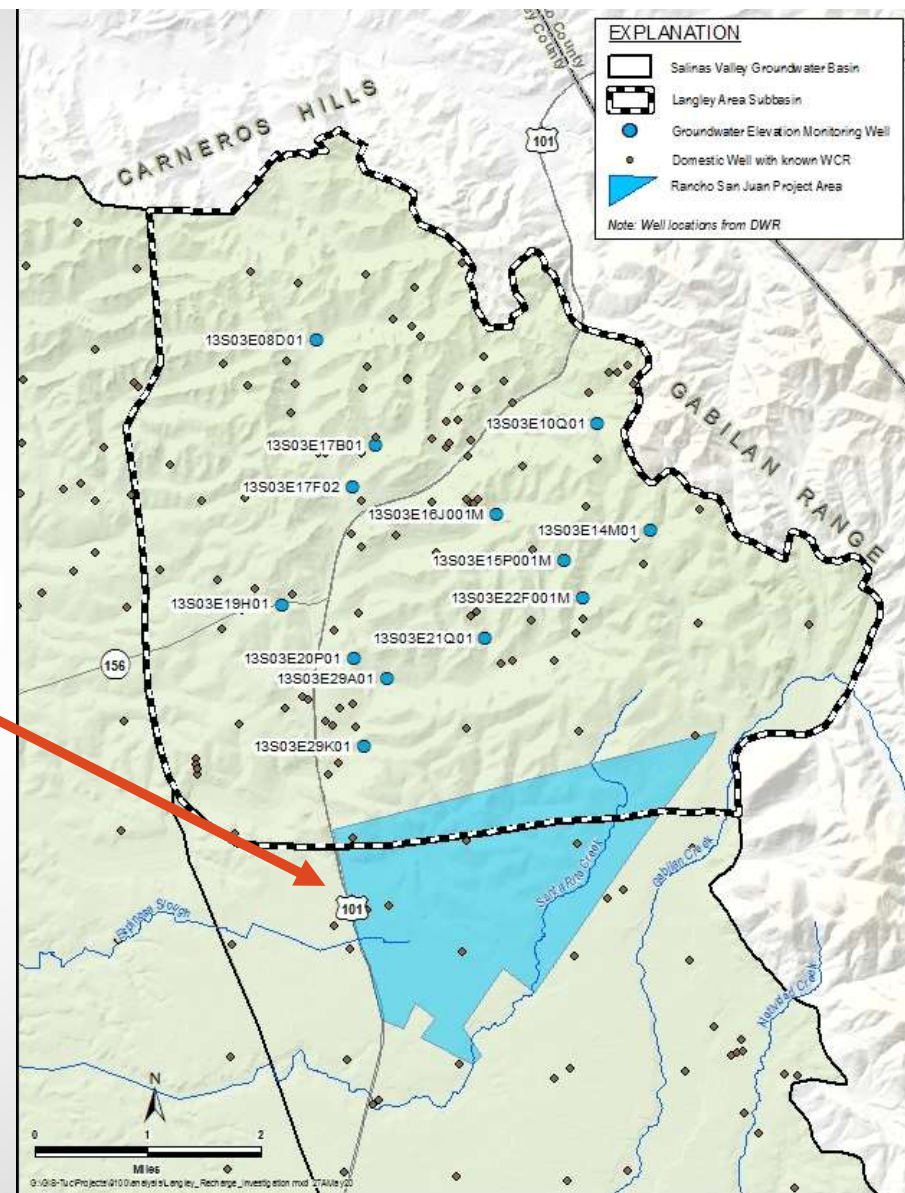
- ➡ Zone 8 overlay – does not exist





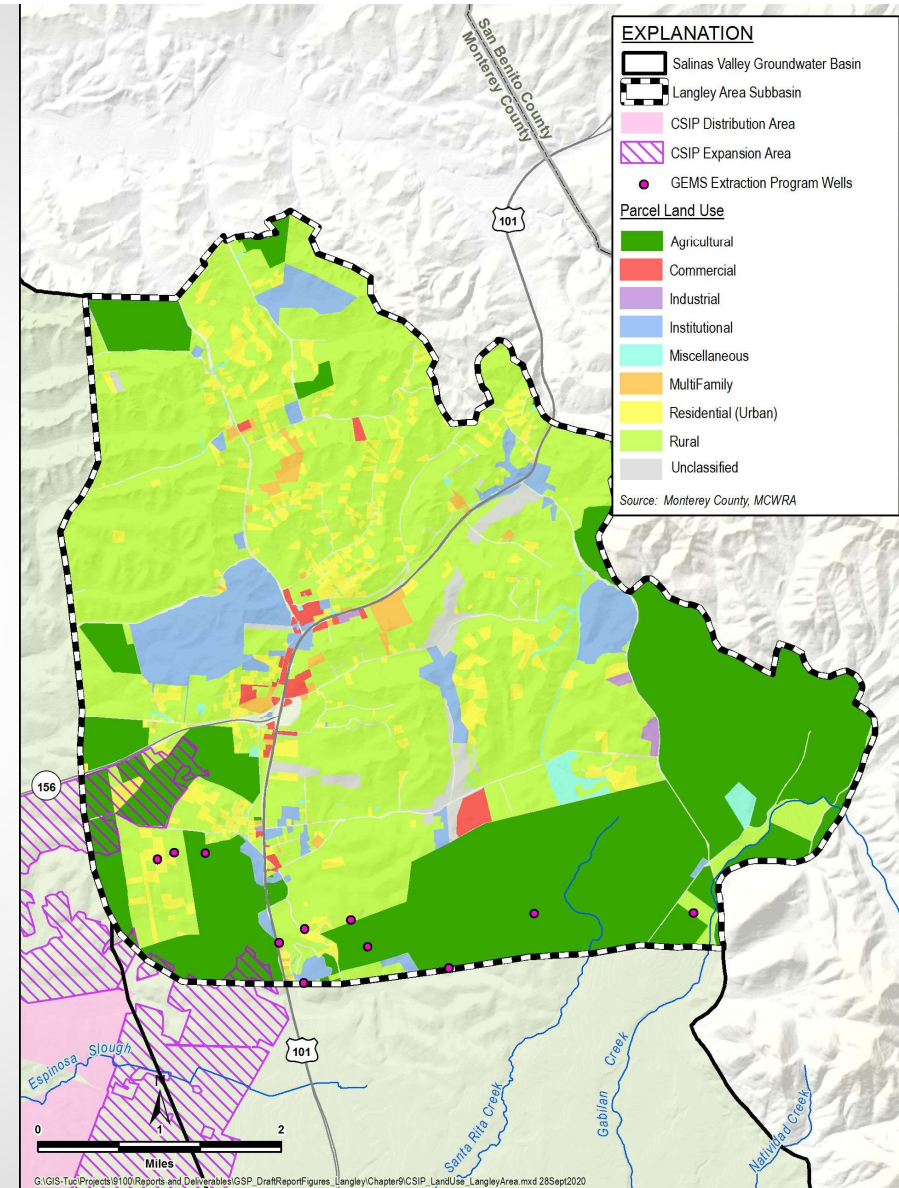
Watersheds

Rancho San Juan



2018 Extraction for Irrigation

- Agricultural land (according to County records, may not be used or irrigated) – 5,297 acres
- Agricultural extraction – 252 AF (reported to GEMS)



2018 Extraction from Drinking Water Systems

Large Water Systems (200+ connections) –
quantity not limited to Langley Subbasin

Alco – 3,827 AF

Cal Water Oak Hills – 417 AF

Pajaro Sunny Mesa (all systems)– 104 AF

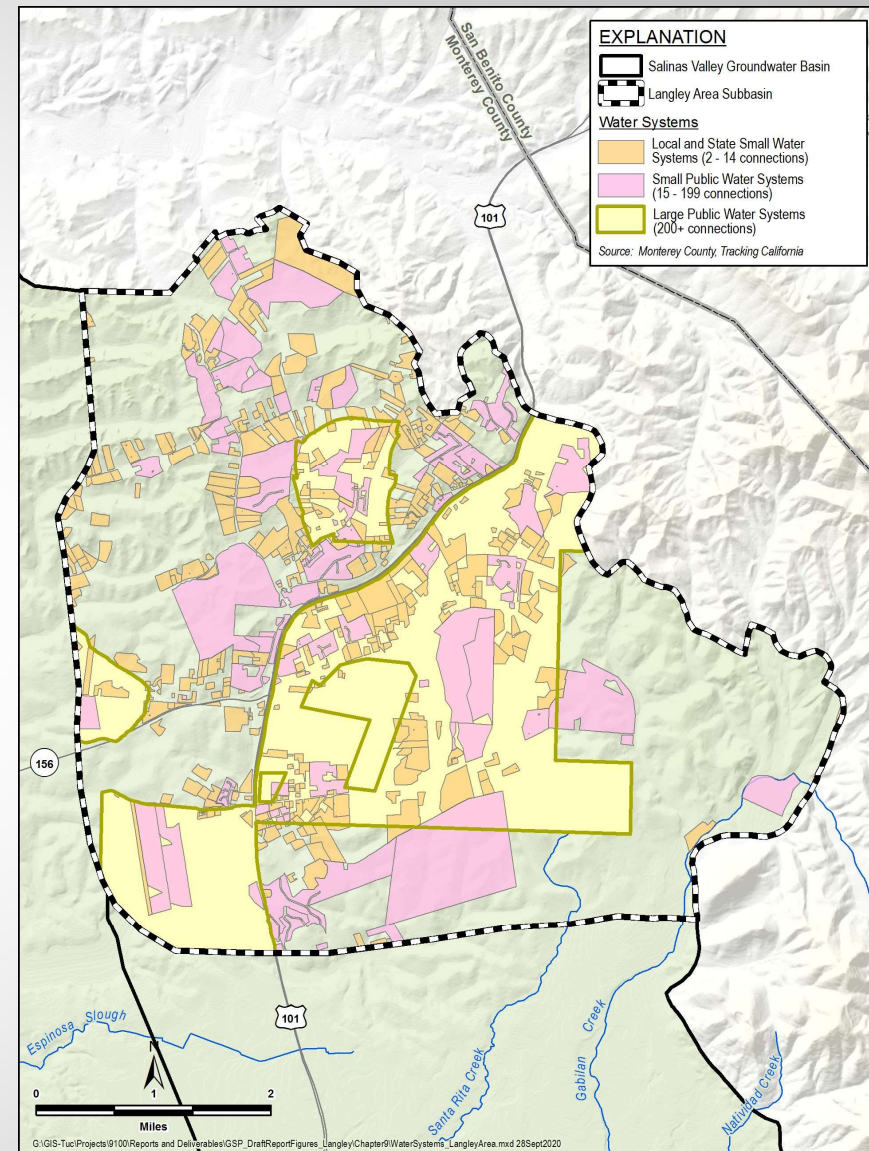
Small Water Systems (15-199 connections)

Sum – 1,335 AF

No current extraction estimate for:

Small State and Small Local Water Systems
(2-14 connections)

Domestic wells

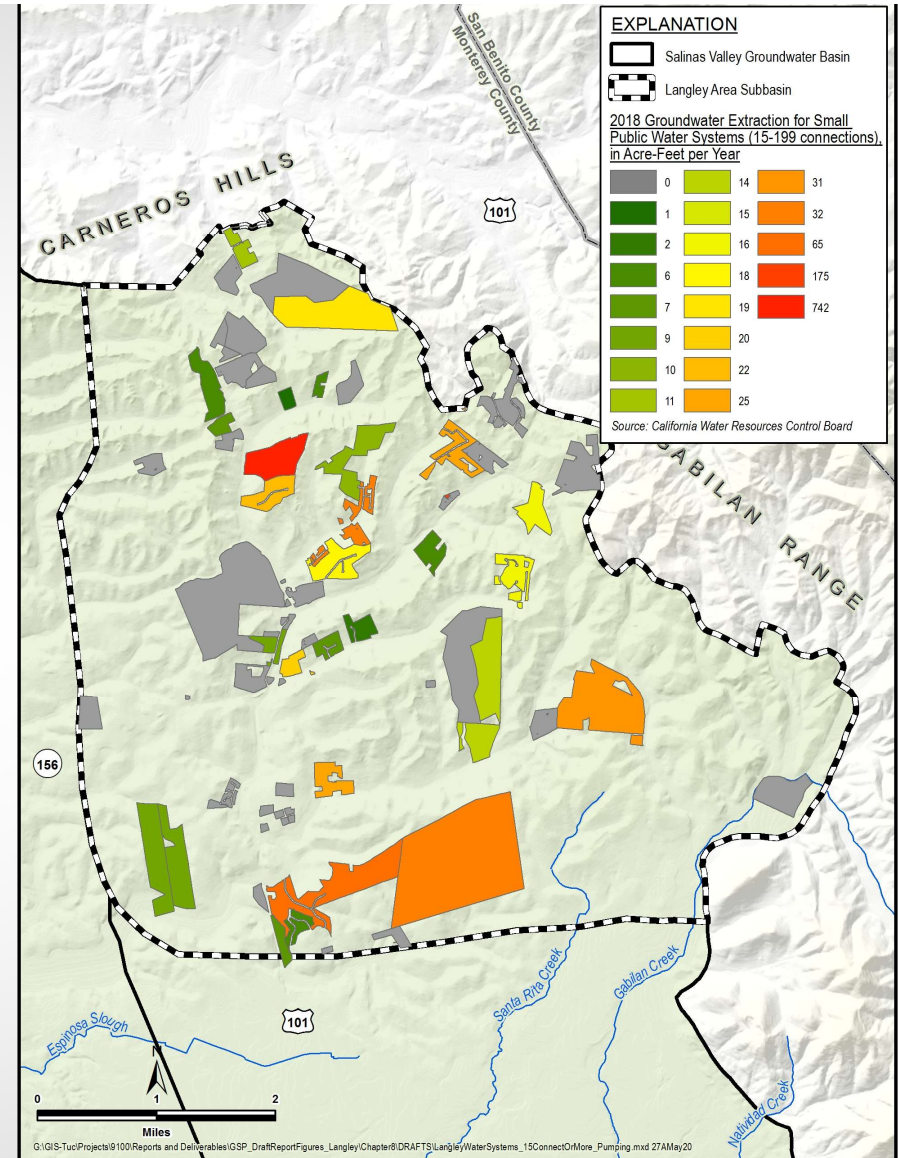


2018 Extraction from Drinking Water Systems

Small Water Systems (15-199 connections)

Map – by 2018 extraction

Sum – 1,335 AF





Additional analyses completed

- Analysis of subsurface conditions at four regions within subbasin to better understand recharge potential
 - Well log correlation within each region
 - Identification of coarser sediments and clay deposits
- Analysis of stratigraphy to comprehend spatial limits of the aquifer (both vertical and lateral), including depth to granite bedrock



Questions

