

April 27, 2018

To: Water Systems in Basins Affected by Proposed Paso Robles Subbasin Boundary Modifications

From: Gary Petersen, Salinas Valley Basin Groundwater Sustainability Agency General Manager

Subject: Definition of Groundwater Basins for Management under the California Sustainable Groundwater Management Act

The Salinas Valley Basin Groundwater Sustainability Agency (SVBGSA) and local water interests are working together to implement California's Sustainable Groundwater Management Act of 2014 (SGMA), which aims to strengthen local control and management of groundwater basins throughout the state. The California Department of Water Resources (DWR) has defined the boundaries for groundwater basins that require management under SGMA but provides an opportunity for local agencies to request and consultation with water agencies located within or adjacent to the boundaries of basins that are affected by the boundary modification. Your system is being contacted because it is located in or near one or more of the basins that SVBGSA is proposing for modification.

The proposed modification will adjust the boundary between the Upper Valley Aquifer and Paso Robles Area subbasins to coincide with the Monterey/San Luis Obispo County line and is shown in the attached map. The attached table lists water systems and the basin(s) in which each water system is located both before and after the proposed boundary modification.

Additional information about the proposed basin boundary revision can be found at <https://sgma.water.ca.gov/basinmod/>. Additional information about rules regulating public and local input, as well as links to information from DWR on the basin boundary modification process are also provided at the website.

If your agency elects to support or oppose the proposed boundary modification, please provide one of the following:

- A copy of a resolution formally adopted by the decision-making body of the affected system
- A letter signed by an executive officer or other official with appropriate delegated authority who represents the affected system. An example letter of support is attached.

An example letter of support, which can be modified for your system is attached. Resolutions or letters of support or opposition for the proposed boundary modification and other comments or questions should be sent to:

Mr. Gary Petersen, Executive Director
Salinas Valley Basin GSA
P. O. Box 1350
Carmel Valley, CA 93924
(831) 471-7518
peterseng@svbgsa.org

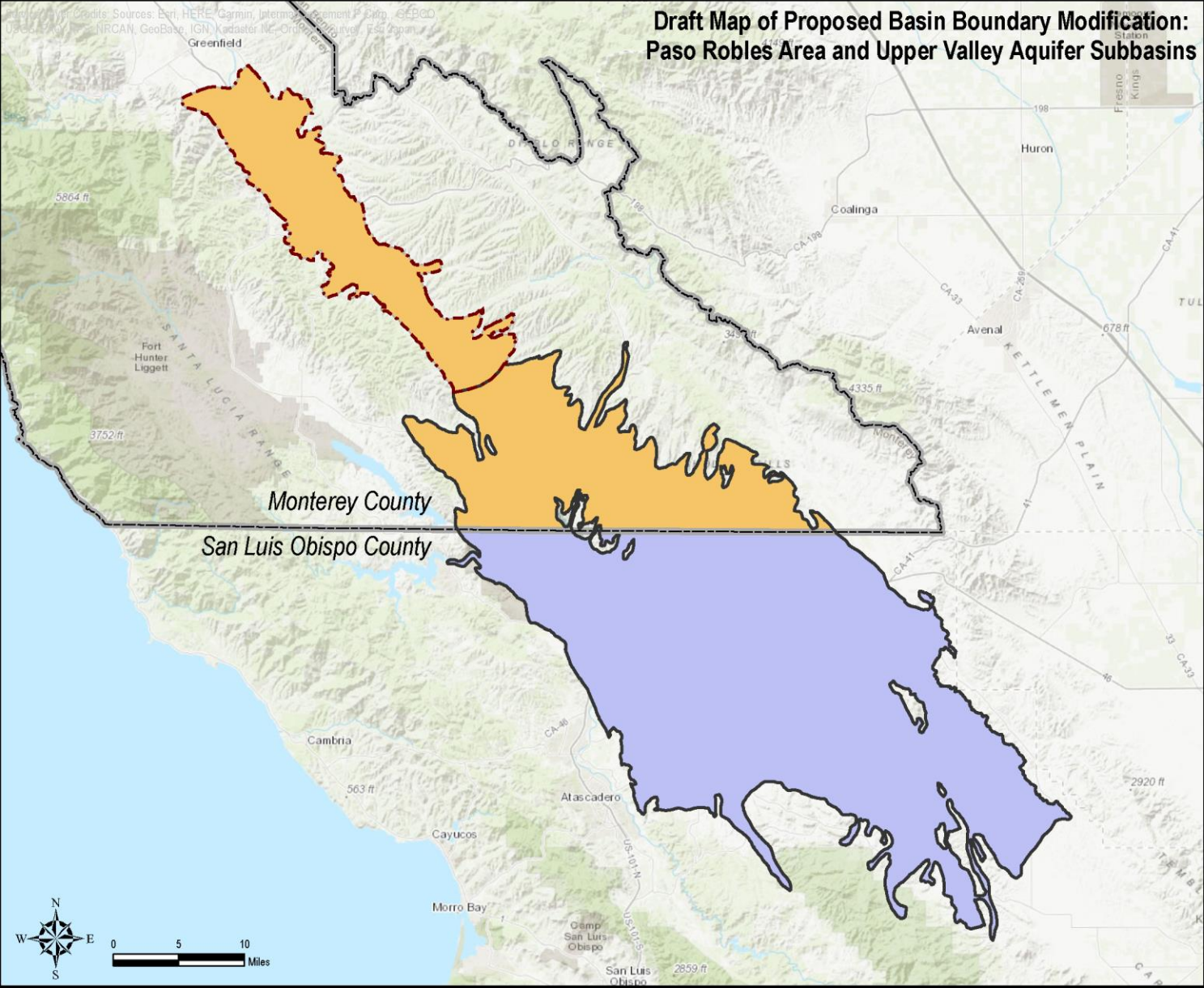
All comments, resolutions, letters of support and opposition, and supporting documents will be provided to DWR with the complete modification request. Response to comments and any evidence that SVBGSA believes rebuts opposition to the proposed modification will also be provided to DWR.

Please provide any input by May 24, 2018. Thank you.

Agency Name	Current Subbasin(s)	Modified Subbasin(s)
Aera Energy Chevron Oil Field Water System	Upper Valley	Upper Valley
Almira Water Association	Paso Robles	Paso Robles
Arciero Vineyards	Paso Robles	Paso Robles
Bradley Union School Water System	Paso Robles	Upper Valley
California Water Service Company – King City	Upper Valley	Upper Valley
CalTrans – Shandon Rest Stop	Paso Robles	Paso Robles
City of Paso Robles	Paso Robles	Paso Robles
County of San Luis Obispo	Paso Robles	Paso Robles
Creston Country Store	Paso Robles	Paso Robles
Creston Elementary School	Paso Robles	Paso Robles
Estrella-El Pomar-Creston (EPC) Water District	Paso Robles	Paso Robles
Estrella Correctional Facility	Paso Robles	Paso Robles
Green River Mutual Water Company	Paso Robles	Paso Robles
Heritage Ranch Community Services District	Paso Robles	Paso Robles
Hunter Ranch Golf Course	Paso Robles	Paso Robles
Jack Ranch Café	Paso Robles	Paso Robles
The Links at Vista Del Hombre	Paso Robles	Paso Robles
Loading Chute	Paso Robles	Paso Robles
The Longbranch Saloon	Paso Robles	Paso Robles
Meridian Vineyards	Paso Robles	Paso Robles
Monterey County Water Resources Agency	Upper Valley, Paso Robles	Upper Valley
Mustang Springs Mutual Water Company	Paso Robles	Paso Robles
Paso Robles RV Ranch	Paso Robles	Paso Robles
Pleasant Valley Elementary	Paso Robles	Paso Robles
San Ardo Water District	Upper Valley	Upper Valley
San Luis Obispo County Of	Paso Robles	Paso Robles
San Luis Obispo County Flood Control And Water Conservation District	Paso Robles	Paso Robles
San Miguel Community Services District	Paso Robles	Paso Robles
San Paso Truck Stop	Paso Robles	Paso Robles
Santa Ysabel Ranch Mutual Water Company	Paso Robles	Paso Robles

SATCOM Water Supply – Camp Roberts	Paso Robles	Paso Robles
Scheid Vineyard Water System	Upper Valley	Upper Valley
Shandon-San Juan Water District	Paso Robles	Paso Robles
Spanish Lakes Mutual Water Company	Paso Robles	Paso Robles
Wildhorse Cafe Water System	Upper Valley	Upper Valley
GSA Name	Original Subbasin(s)	Modified Subbasin(s)
Heritage Ranch GSA	Paso Robles	Paso Robles
City of San Miguel GSA	Paso Robles	Paso Robles
City of Paso Robles GSA	Paso Robles	Paso Robles
Paso Basin - County of San Luis Obispo GSA	Paso Robles	Paso Robles
Shandon - San Juan GSA	Paso Robles	Paso Robles

Draft Map of Proposed Basin Boundary Modification: Paso Robles Area and Upper Valley Aquifer Subbasins



- Existing Upper Valley Aquifer Subbasin
- Existing Paso Robles Area Subbasin
- Modified Upper Valley Aquifer Subbasin
- Modified Paso Robles Area Subbasin
- County Line



April 13, 2018



Dear Mr. Petersen:

We have received the notice of the Salinas Valley Basin Groundwater Sustainability Agency's planned request to the California Department of Water Resources (DWR) for a groundwater basin boundary modification. This basin boundary modification is being proposed to simplify and enhance groundwater management as part of the Sustainable Groundwater Management Act. Our public water system, {system name here}, has a service area in the Upper Valley Aquifer subbasin, the Paso Robles Area subbasin, or both subbasins and is therefore an affected system.

We agree that the modified Upper Valley/Paso Robles subbasin boundary will allow for more efficient sustainability planning and management than the existing subbasin boundary defined by DWR. The proposed boundaries represent the appropriate area to sustainably manage our groundwater supplies. Therefore, our system has elected to support the proposed boundary modification.

As our system's {position here}, I have the appropriate delegated authority to represent our system and sign this letter of support. Please continue to inform us on how to participate in groundwater management activities for the proposed basin.

Sincerely,

Name

Position, System