

# Initial Notification of Potential Basin Boundary Modification Request

FILING MAY BE VIEWED AT <https://sgma.water.ca.gov/basinmod/init/preview/161> ?

## 1. LOCAL AGENCY INFORMATION

---

Name: Salinas Valley Basin Groundwater Sustainability Agency  
Address: P.O. Box 1350  
City: Carmel Valley Zip: 93924-\_\_\_\_  
Phone(Work): (831) 682-2592 Phone(Cell): (831) 682-2592  
Email: [peterseng@svbgsa.org](mailto:peterseng@svbgsa.org) Fax:

## 2. LOCAL AGENCY POINT OF CONTACT INFORMATION

---

Name: Gary Petersen  
Address: 200 Lincoln Avenue  
City: Salinas Zip: 93901  
Phone(Work): (831) 758-7241 Phone(Cell):  
Email: [peterseng@svbgsa.org](mailto:peterseng@svbgsa.org)

## 3. LINKS TO LOCAL AGENCY'S INTERNET WEBSITE

---

*General information regarding potential basin boundary modification process is posted or will be posted.*  
<https://svbgsa.org/>

## 4. BRIEF DESCRIPTION OF POTENTIAL BASIN BOUNDARY MODIFICATION REQUEST

---

a. The Salinas Valley Basin Groundwater Sustainability Agency (SVBGSA) is submitting a request for a jurisdictional modification of the border between the Upper Valley Aquifer and Paso Robles Area subbasins. Currently, the border lies north of the Monterey/San Luis Obispo county line and the Paso Robles Area subbasin lies in both Monterey and San Luis Obispo counties. The proposed internal boundary revision adjusts the border to coincide with the county line, placing the Paso Robles Area subbasin entirely within San Luis Obispo County. This modification makes the border between the Salinas Valley Basin GSA and the Paso Basin – County of San Luis Obispo GSA consistent with county jurisdiction and will simplify implementation of sustainable management projects.

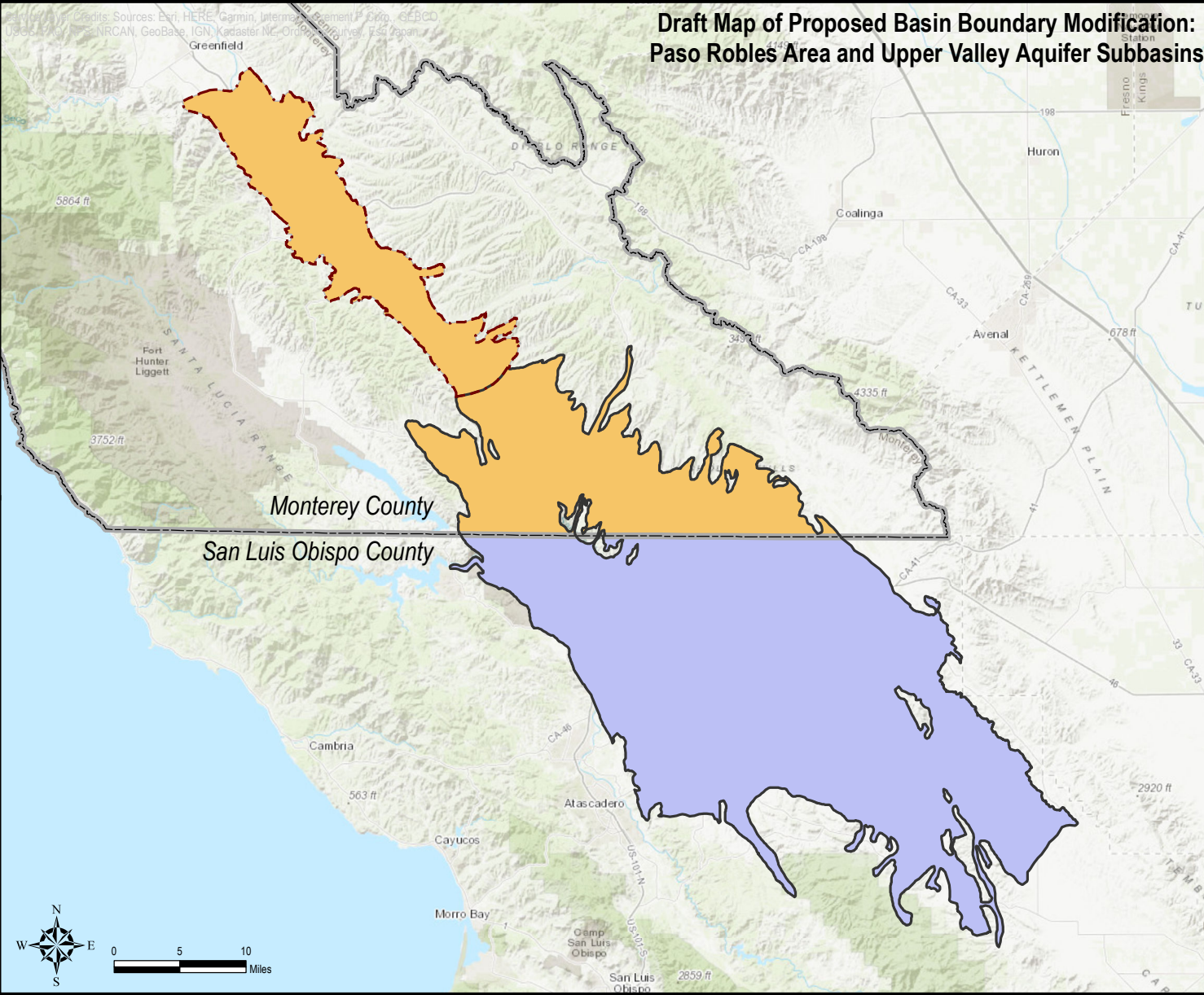
## 5. POTENTIAL BASIN(S)/SUBBASIN(S)

---

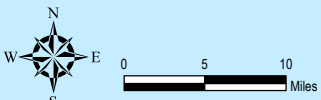
3-004.05 UPPER VALLEY AQUIFER  
3-004.06 PASO ROBLES AREA

---

# Draft Map of Proposed Basin Boundary Modification: Paso Robles Area and Upper Valley Aquifer Subbasins



- Existing Upper Valley Aquifer Subbasin
- Existing Paso Robles Area Subbasin
- Modified Upper Valley Aquifer Subbasin
- Modified Paso Robles Area Subbasin
- County Line



April 13, 2018

